



MIDWEST SURVEYS
LOGGING - PERFORATING - CONSULTING SERVICES
P.O. Box 68, Osawatomie, KS 66064
913 / 755 - 2128

GAMMA RAY / CEMENT BOND / CCL

File No.

Company **Birk Petroleum**

Well **Bowers No. New-1-B**

Field **Winterscheld**

County **Woodson** State **Kansas**

Location

1670' FSL & 1650' FEL

SE-NW-SE

Sec. 29 Twp. 23S Rge. 15E

Permanent Datum

GL

Elevation

1068.6'

Log Measured From

GL

Elevation

1068.6'

Drilling Measured From

GL

Elevation

1068.6'

Other Services
Perforate
K.B. NA
D.F. NA
G.L. 1068.6'

API # 15-207-27,053

Date	10-03-2006
Run Number	One
Depth Driller	1566.0
Depth Logger	1564.6
Bottom Logged Interval	1561.6
Top Log Interval	15.0
Fluid Level	Full
Type Fluid	Water
Density / Viscosity	NA
Salinity - PPM Cl	NA
Max Recorded Temp	NA
Estimated Cement Top	0.0
Equipment No	104
Location	Oswantonio
Recorded By	Steve Windisch
Witnessed By	Ed Birk

BORE HOLE RECORD

CASING RECORD

Run No	BIT	FROM	TO	SIZE	WGT	FROM	TO
One	12.25"	0.0	40.0	8.625"		0.0	40.0
Two	60.75"	40.0	1566.0	4.50"		0.0	1566.0

54 Fold Here >>>

All interpretations are opinions based on inferences from electrical or other measurements and we cannot and do not guarantee the accuracy or correctness of any interpretation, and we shall not, except in the case of gross or willful negligence on our part, be liable or responsible for any loss, costs, damages, or expenses incurred or sustained by anyone resulting from any interpretation made by any of our officers, agents or employees. These interpretations are also subject to our general terms and conditions set out in our current Price Schedule.

Comments

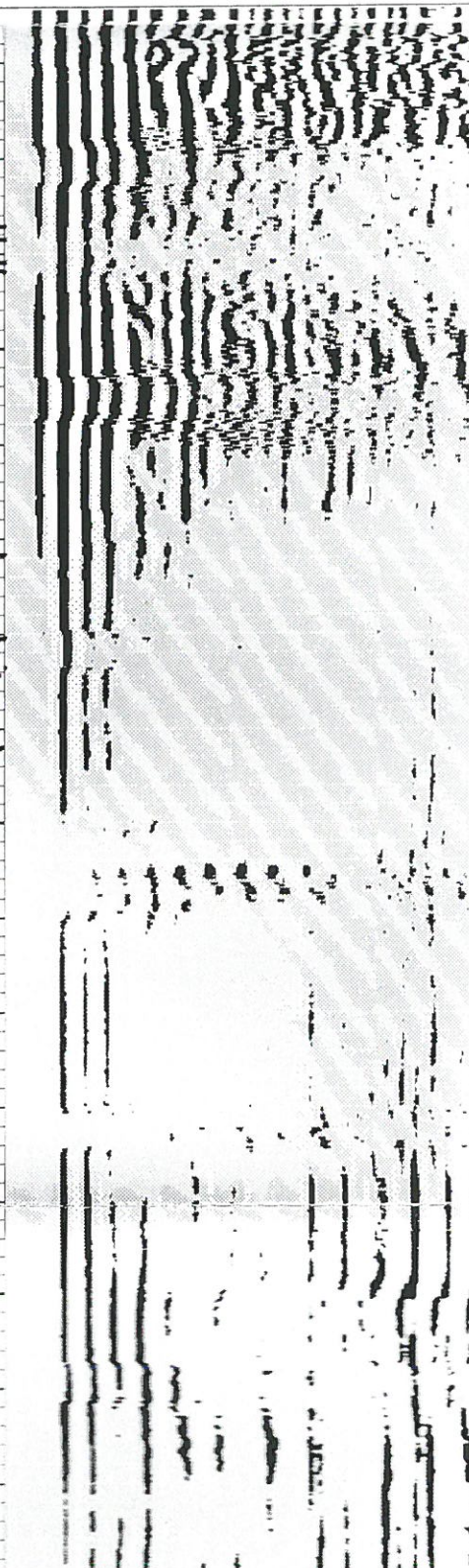
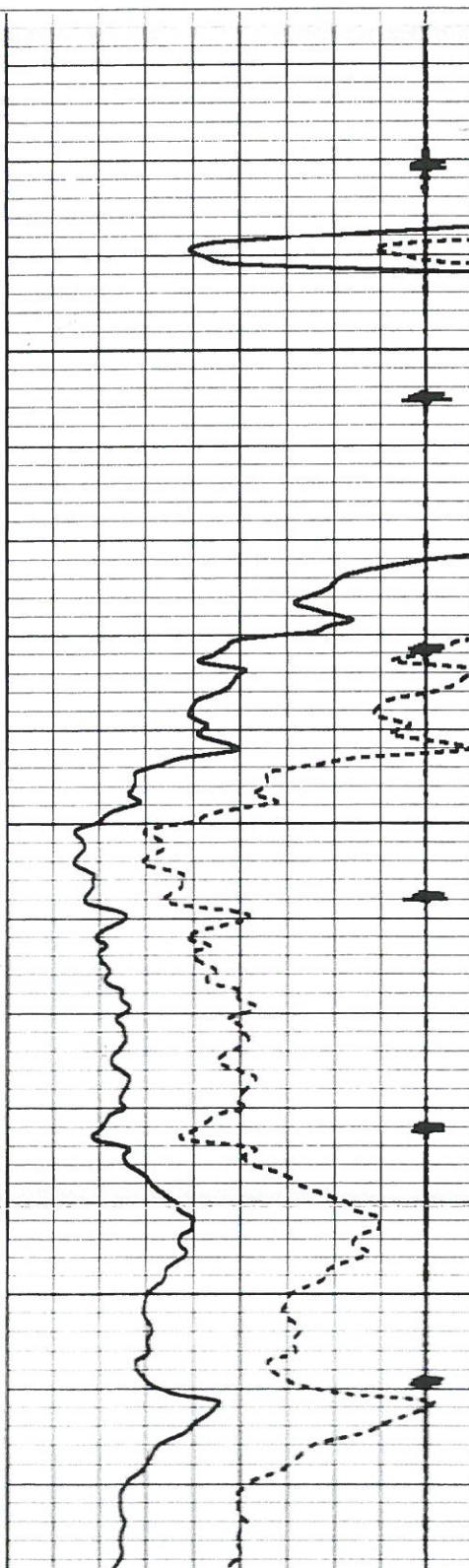
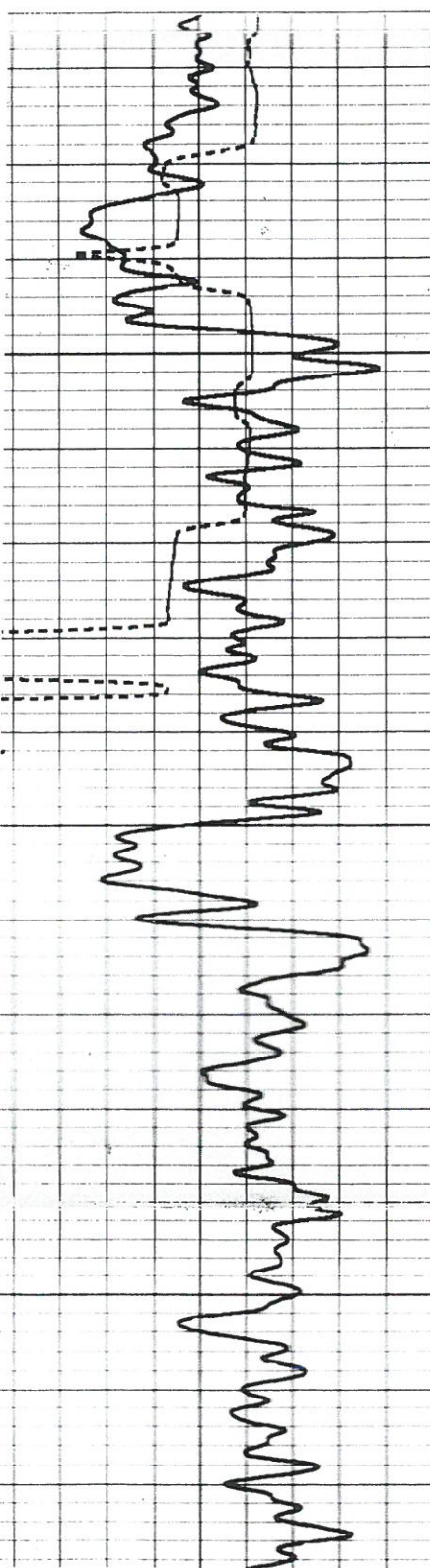
Drilling Contractor :
Birk Oil Company, Inc.

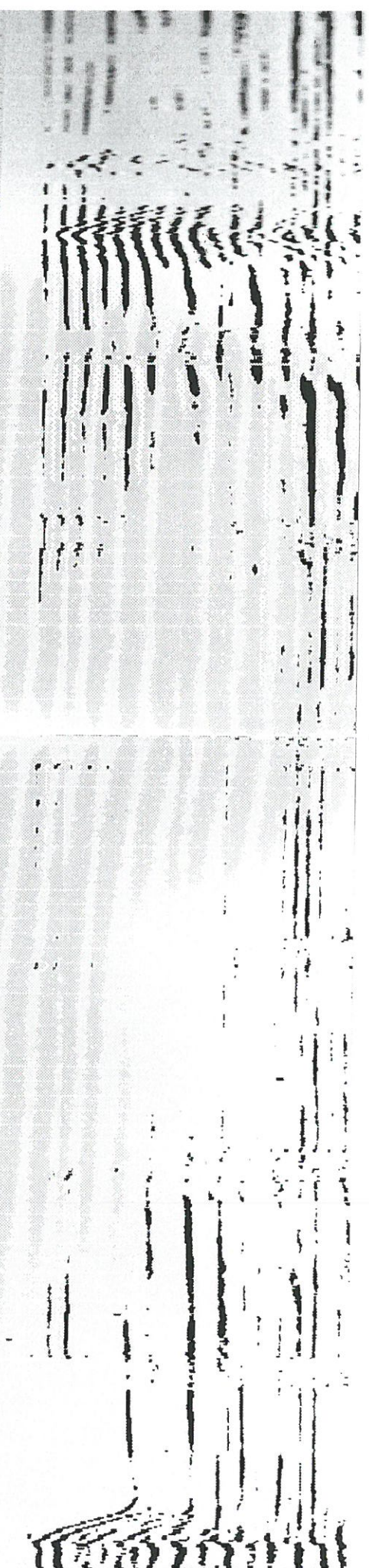
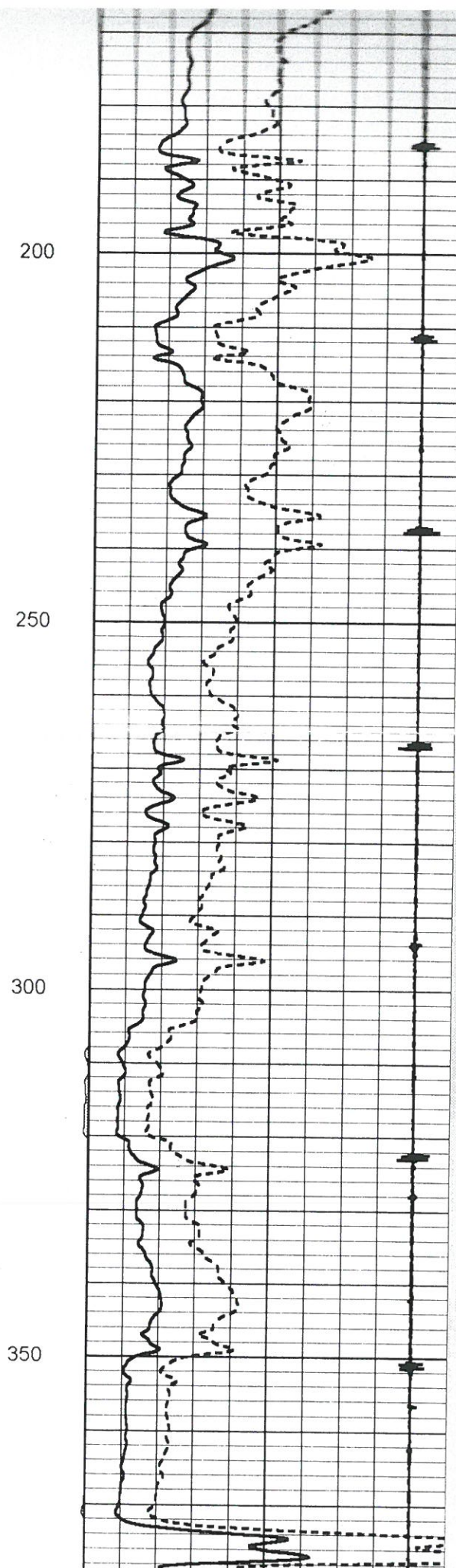
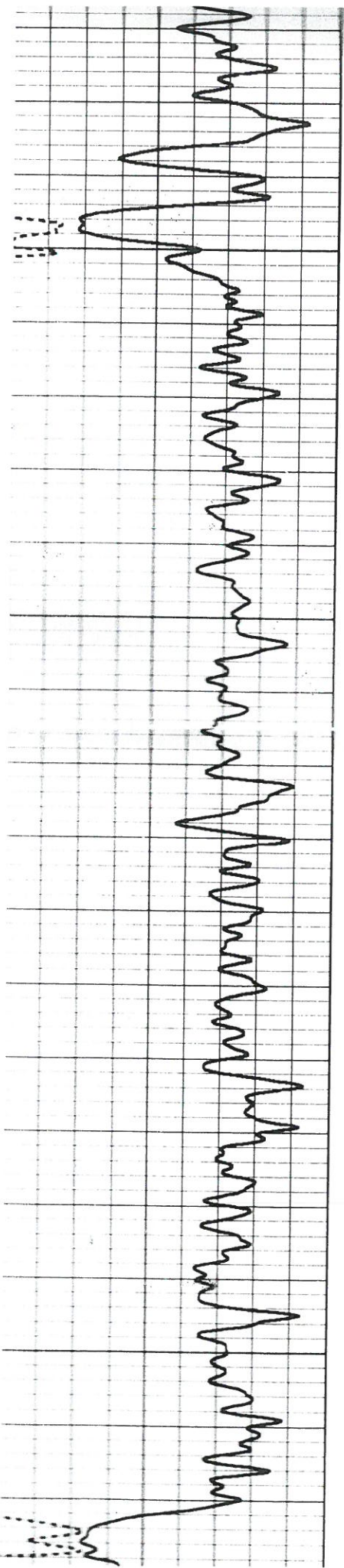
atabase File: bowers18.db
 ataset Pathname: pass1
 resentation Format: cbl01
 ataset Creation: Tue Oct 03 09:37:11 2006 by Log 6.2_B4
 harted by: Depth in Feet scaled 1:240

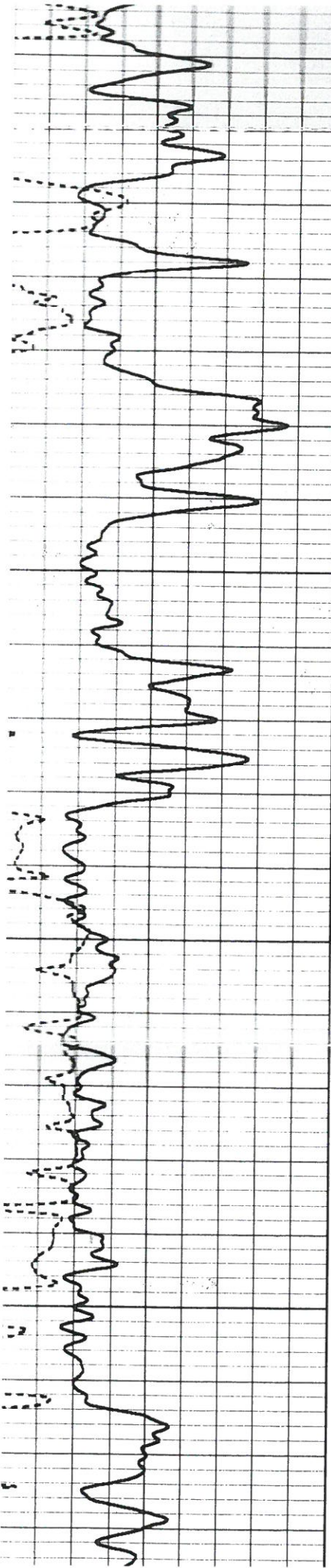
Travel Time (usec)	150
Gamma Ray (GAPI)	150

0	Amplified Amplitude (mV)	50
0	Amplitude (mV)	100
-9	Collar Locator	1

200 Variable Density 1200





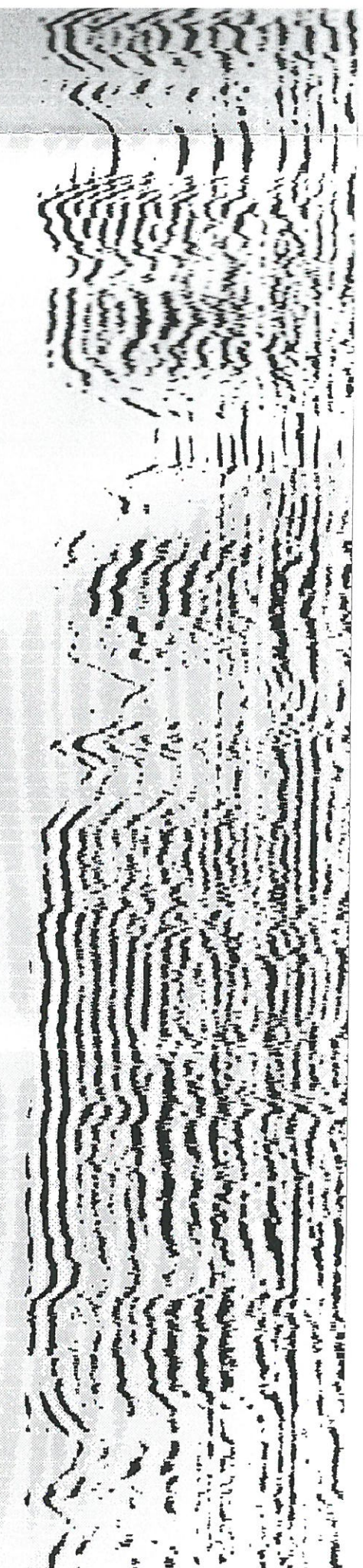
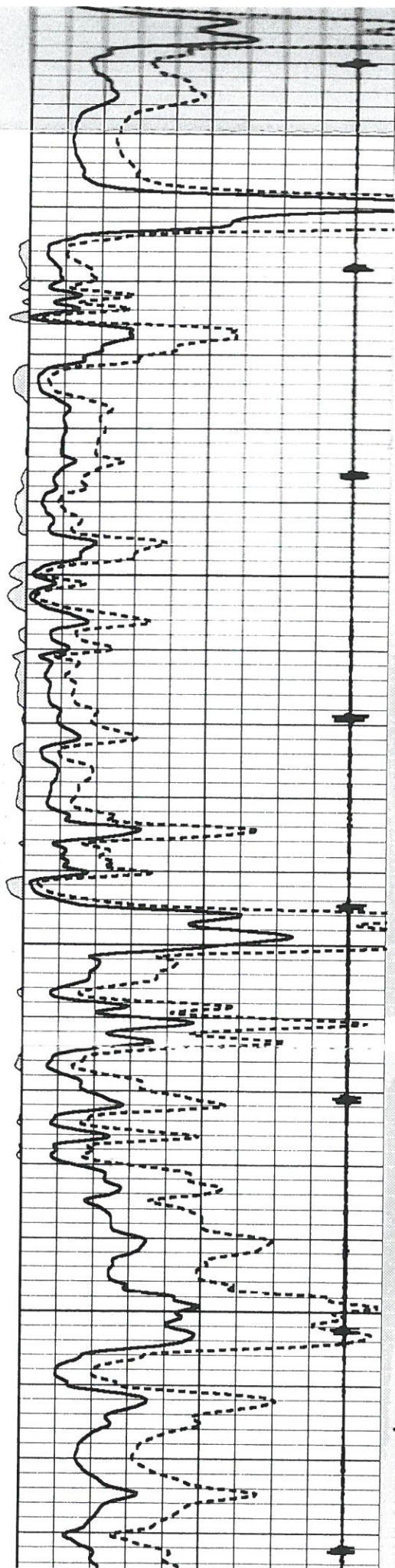


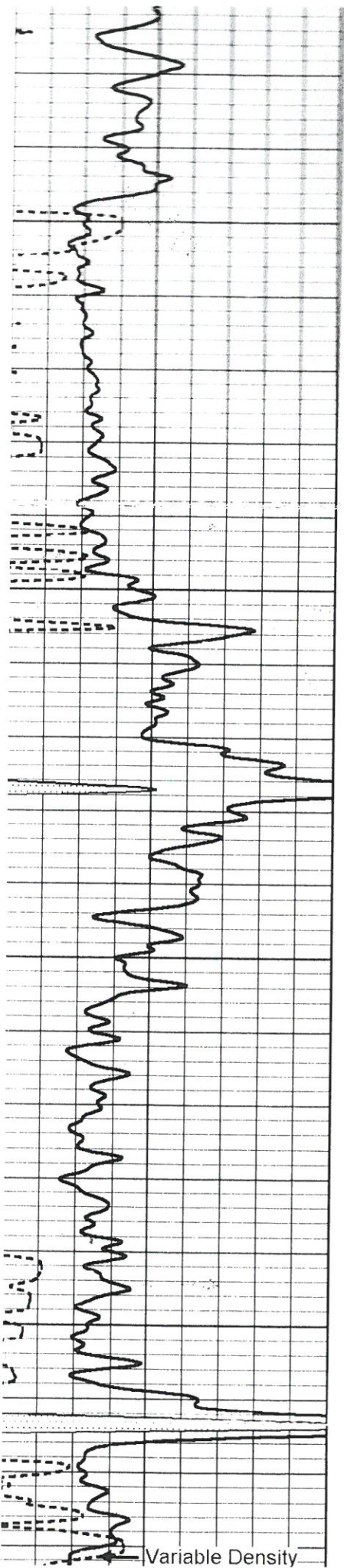
400

450

500

550



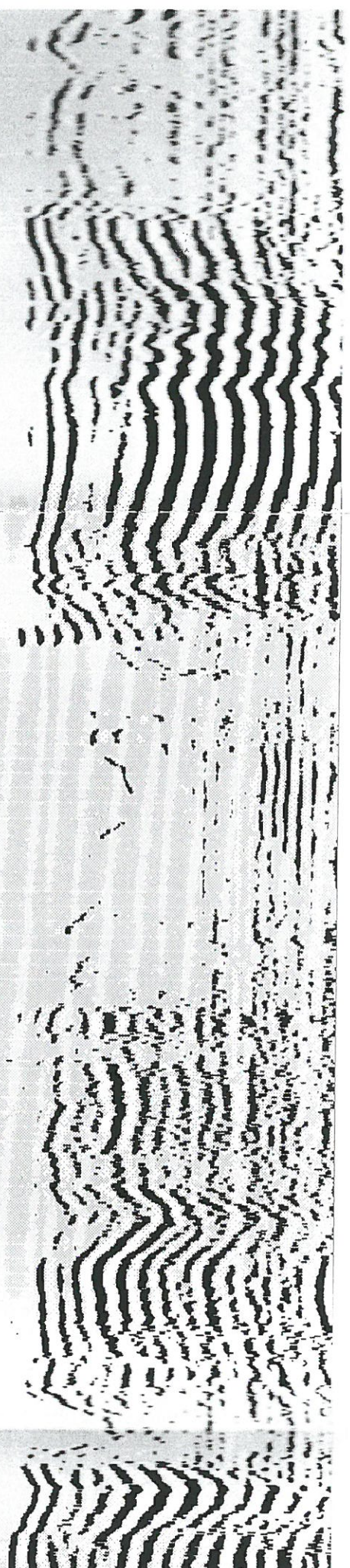
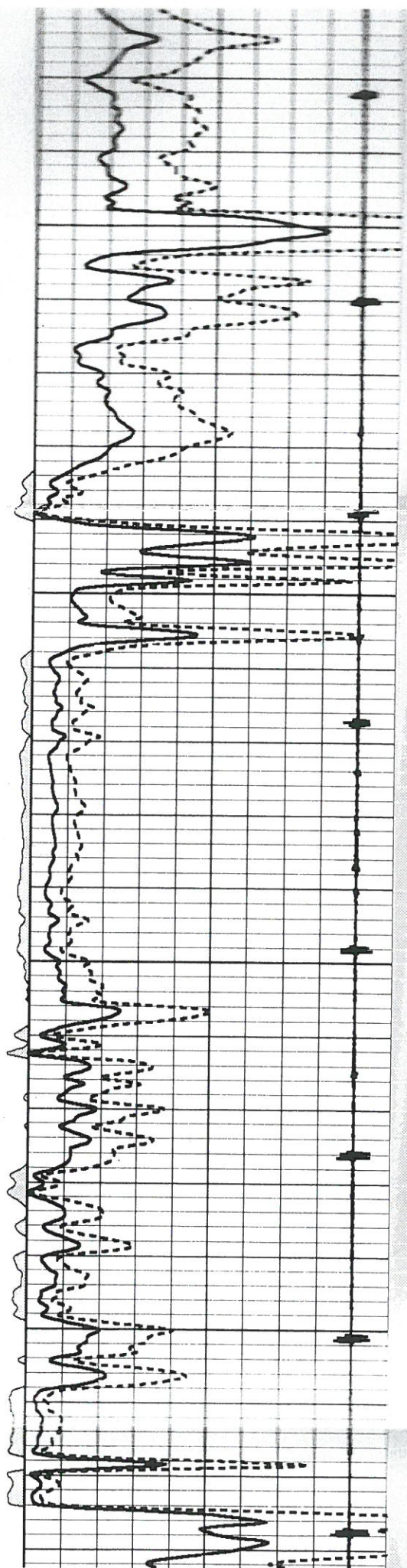


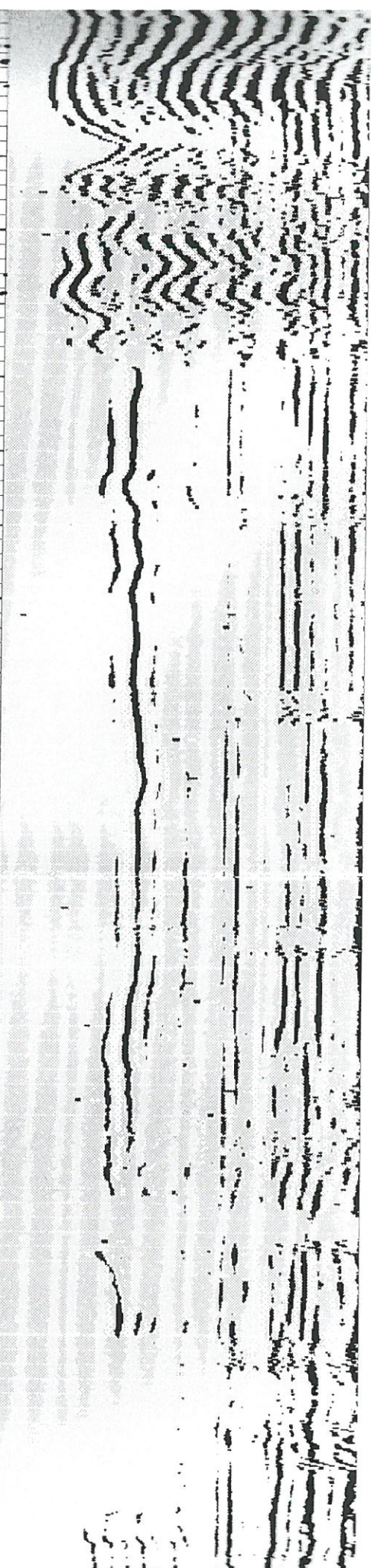
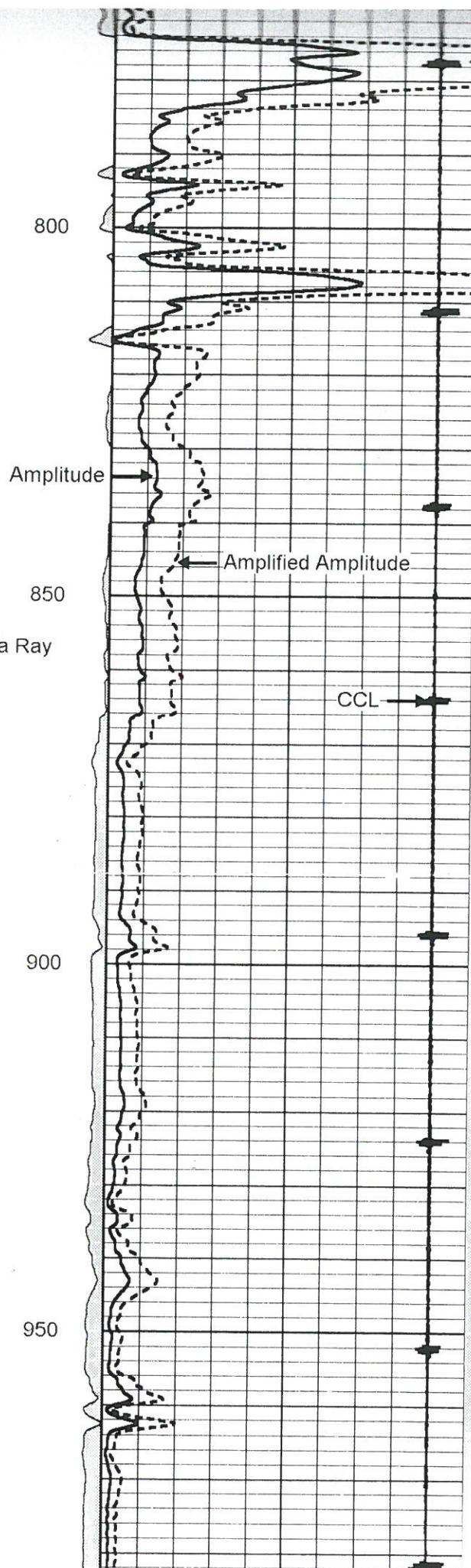
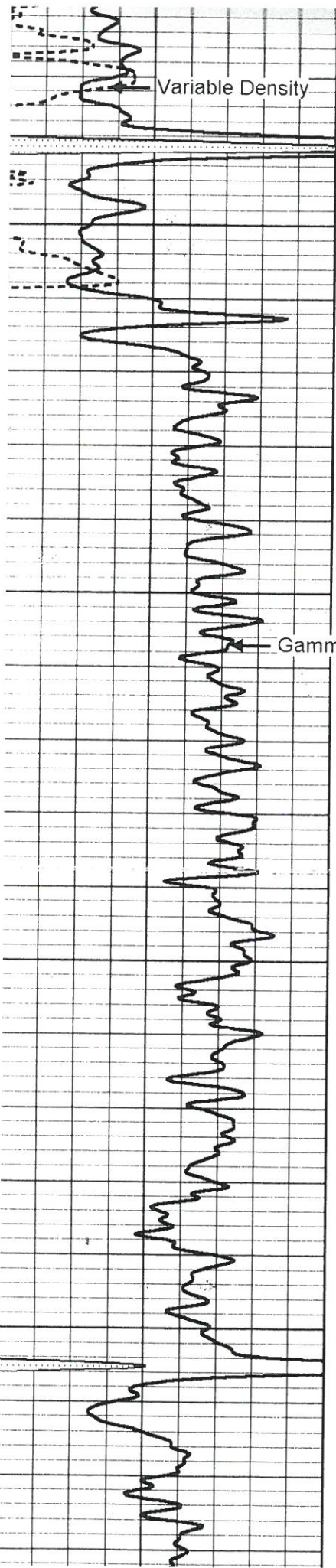
600

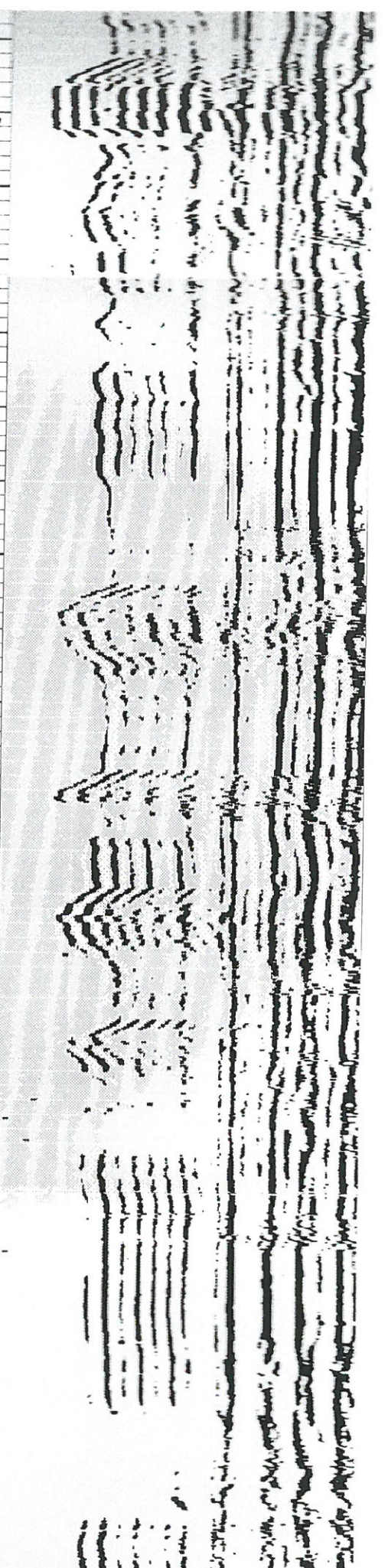
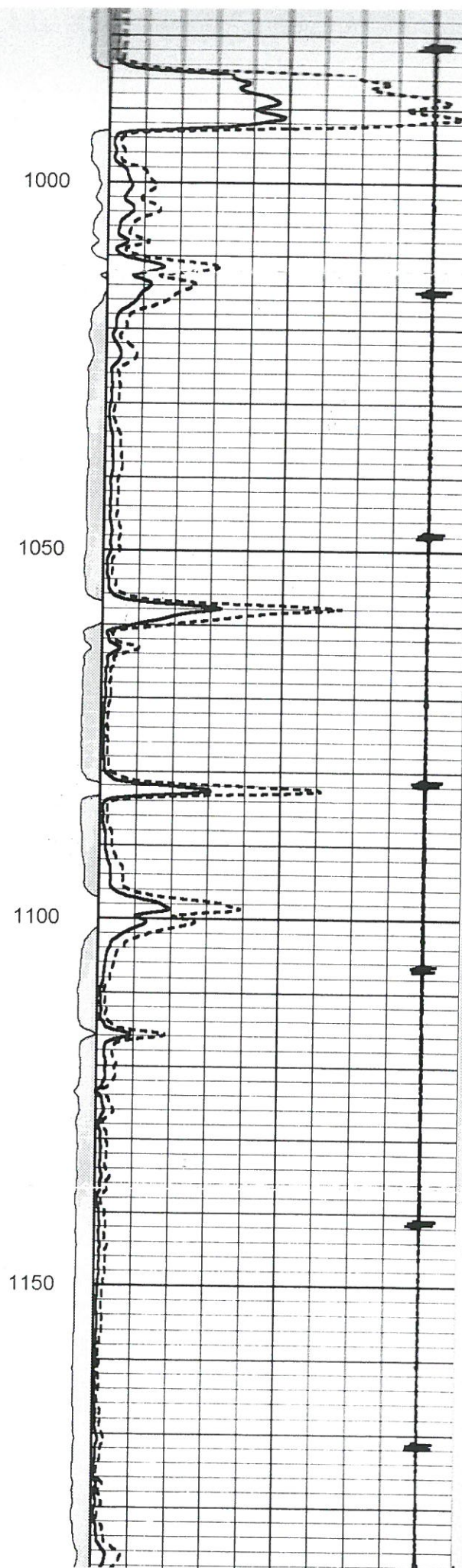
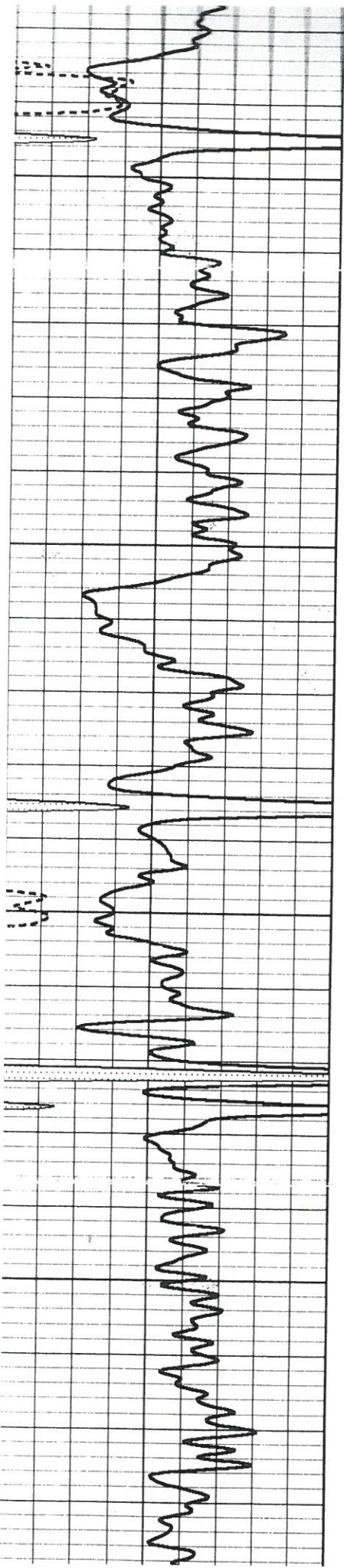
650

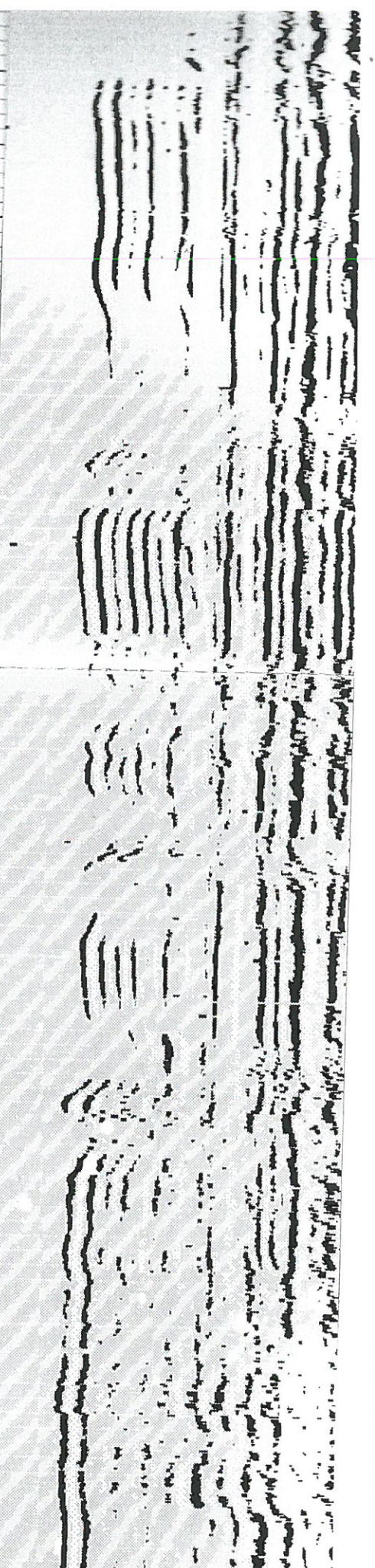
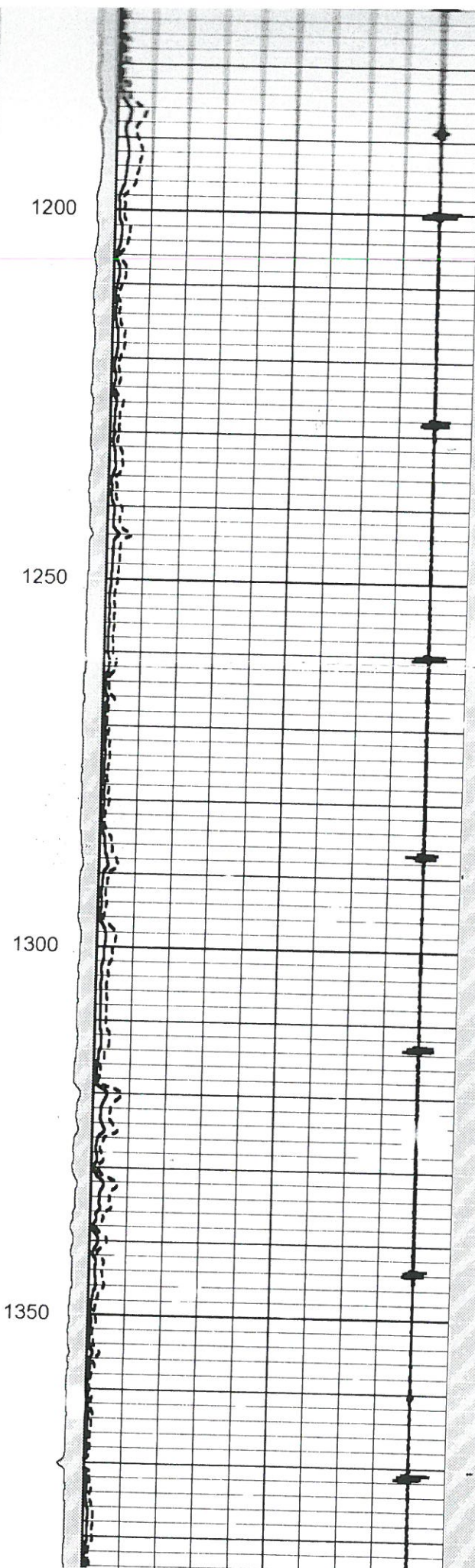
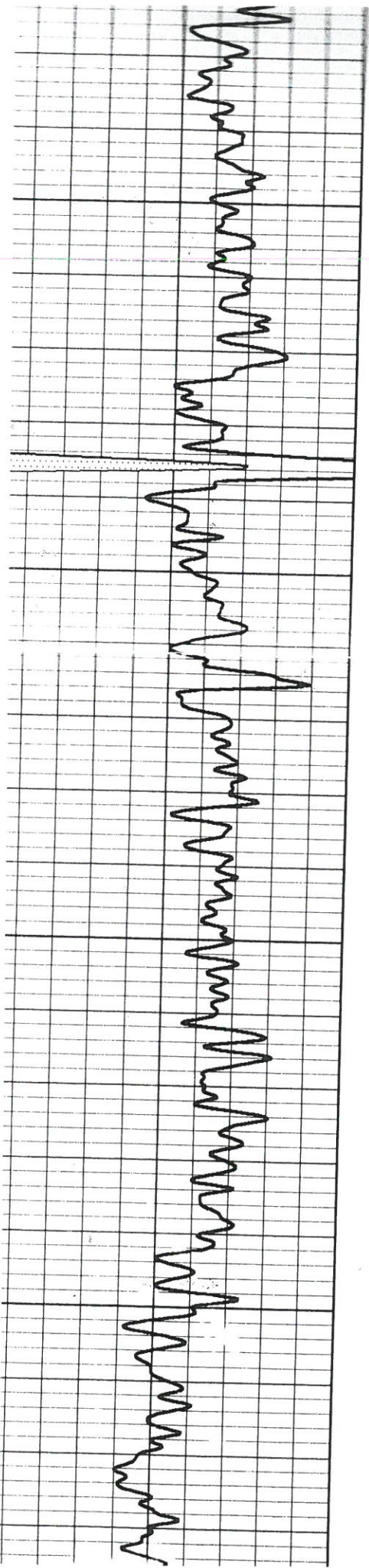
700

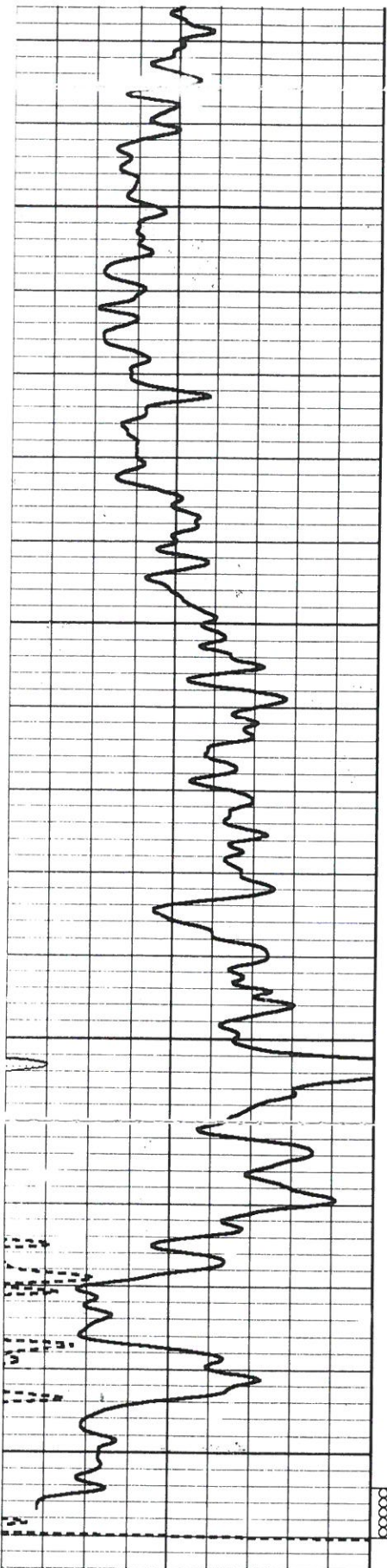
750





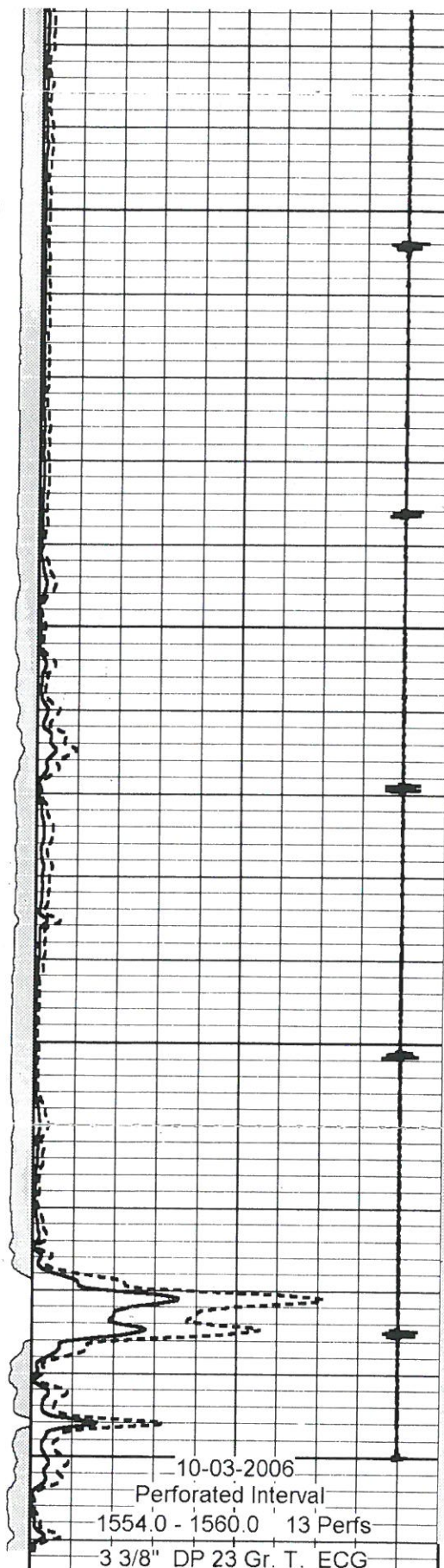






Travel Time (usec)	150
Gamma Ray (GAPI)	150

1400
1450
1500
1550



10-03-2006
Perforated Interval
1554.0 - 1560.0 13 Perfs
3 3/8" DP 23 Gr. T. ECG

0	Amplified Amplitude (mV)	50
0	Amplitude (mV)	100
-9	Collar Locator	1



200 Variable Density 1200

Birk Petroleum

Bowers New #2

NE NW SE Section 29-23S-15E

Woodson County, Kansas

COMMENCED: 01-02-07	STATUS: OIL
COMPLETED: 01-07-07	A.P.L. NO: 15-207-27070
CONTRACTOR: Skyy Drilling Company	OPERATOR LIC: 31280
SIZE OF HOLE: 7 7/8"	FIELD: Winterscheid
SURFACE PIPE: 40' 8 5/8"	ELEVATION: 1049 K.B.
CEMENTED WITH: N/A	LOGS RUN: Osage Wireline
LONG STRING: 4 1/2"	MUD SYSTEM: Chemical
CEMENTED WITH: N/A	OTHER:
R.T.D. 1938'	

Dave Smith
Geologist

William M. Stout
Geologist

FORMATION TOPS

1042 G.L. 1049 K.B.

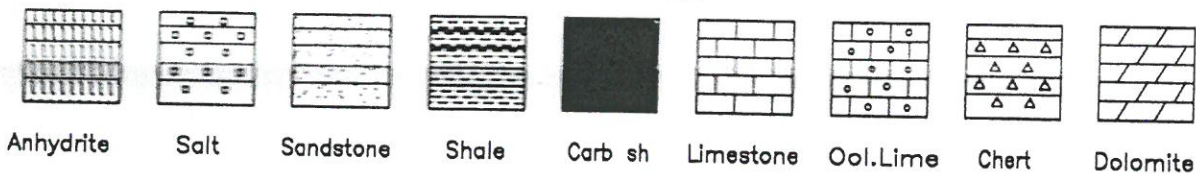
	<u>Sample</u>	<u>Log</u>
Ardmore	1203 -154	1204 -155
Mississippi	1488 -439	1492 -443
Kinderhook	1836 -787	1842 -793
Arbuckle	1890 -841	1890 -841
RTD	1938 -889	1945 -896

CONCLUSIONS

The decision to set and cement casing was made to further evaluate the oil and gas shows through perforations.

2nd - 7th

LEGEND



DRILLING TIME IN MINUTES
PER FOOT

Rate of Penetration Decreases

5" 10" 15" 20" 25"

DEPTH

LITHOLOGY

SAMPLE DESCRIPTIONS

OIL SHOWS

REMARKS

GL 1042
KB 1099

1100

50-266, 504 5/55-BBN.
F.B. RES. MLCN. H.L. FLUOR.
PKSTNSPT, N FLUOR. P-P

55-BRN FG. ARC. MICA. 5/
CALC. HD. FL. OOL. DK. CRTSTN.
SSFO. N FLUOR. P-P

54-6, M. G. 64. SPY.

54-RA.

54-6, 64. 541 504

54-RA.

54-6, 64, CALC. 5/504. NT.

54-6, 64, 11/55-BBN. F.B. RES.
ARC. MICA. 5/5. P-P

54-6, 64, 54. RA.

50

1200

15-L-BEN. BEN. F.Y. FOR. DRG.
K. N. P

15-L-BEN. BEN. F.Y. FOR. DRG.
K. N. P

SQUIRREL
SA
1114(65)

ARMORE
1203 (-15)

1703-18

1-07-204 10572000

54 LL 4/504

ЖА-166, 64. 4/44. 404. Н.С.

5th 4th 1st 2nd

SA-6, AKG, 5/5D-1

5A-4A.

SA-ARN/S/14. BROWN J. DAVIS.

IN-4 BK GEN 504

54-DR-6 (BLK CAR)

54-DKGG BUC

2024-25 by Sec 529

5A-AD. W/SS - LG, F-G MIA
5A2. AD. 118.06

ST. H. 6 F-6. MICH. TO REG.
NS. PD W/SH-69.

55-28 Feb.

SS-AA N/CARB. FC RIG. SAT.
G. G. G.

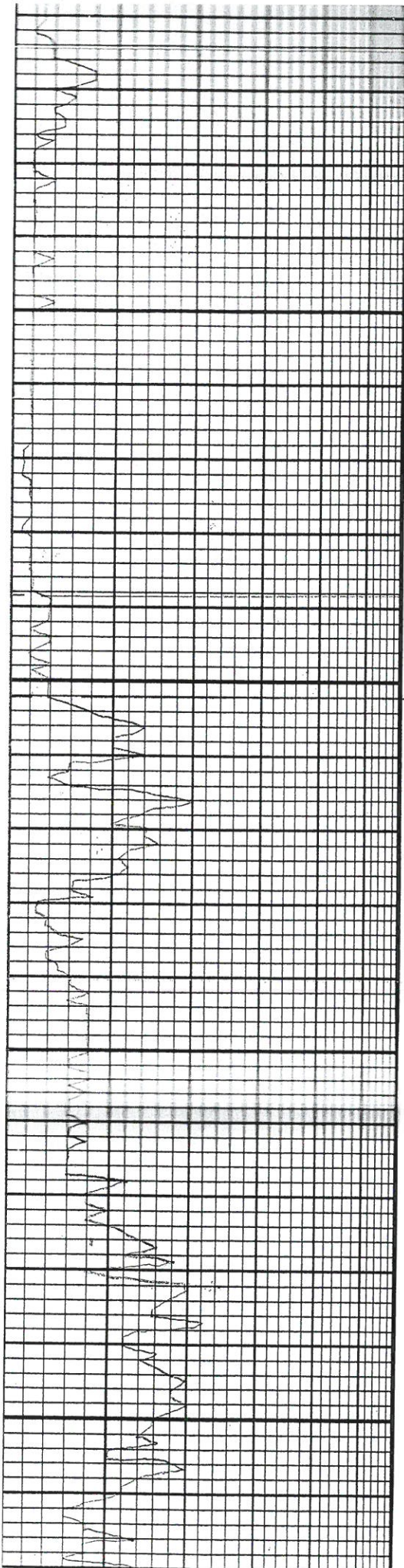
55, 54-00

55 854-NH.

25-11-1961

2. PL.

WATER SAND

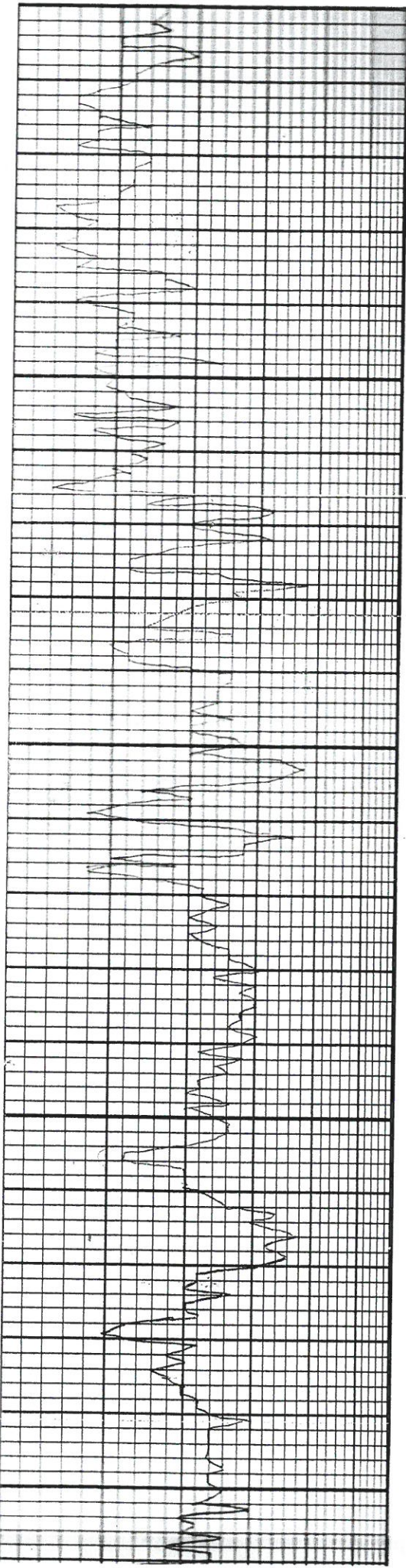
[illegible]

MISSISSIPPI
14886-4

(F 453)

TRIP BIT ①

Vis. 31
wt. 9.0



Mar

50

705

50

1802

15	Ben. F-M & DNS. NS NUG
15	15-BA W/CAL. WHL 1/2 G. OFD. TRSD. NS NUG
15	CAL. 22 NS
15	
15	CAL. 11.5/21 G. TRAPS NS.
15	
15	15-LLG. F-M DNS. NS. NUG W/CH. 1/2 TRDOL. BEN F-M SUT. NSIDE LL STW SPOT FLUOR 1/2 FO. G.D. F-B
15	
15	AA.
15	
15	15-LLG. 1/2 BEN F-M DNS. NS. NUG W/CAL. AA.
15	
15	15-AA. CAC AA.
15	
15	15-AAW/CAL. 11.5/514 G. GRN DOL. LL. BAN 1/2 G. F-M SUC NUG LL FLUOR 1/2 NUG S.F. G
15	15-BEN. F-M X DNS. NS. NUG
15	
15	15-AA.
15	15-AA. 5/DOLIC. NS. NUG
15	15, 1/2 tan, f x ln, succ, shi sdy sff, some calc spar poor
15	no odor
15	Sh. 1/2 grn qtz. silt, 15, AA
15	no odor
15	Sh. 1/2 grn qtz. s. Hty, occ H tan dol ls
15	no odor
15	15, 1/2 tan, f x ln succroic, sh. 1/2 sdy, some f. qtz hubbler
15	no odor
15	Sh. 1/2 grn qtz. s. Hty in part. occ - tan succ 15 pqrte

2

07.

U.S. 35
Wt 9.6
Tr L.C.M.



MIDWEST SURVEYS

LOGGING - PERFORATING - CONSULTING SERVICES
P.O. Box 68, Osawatomie, KS 66064
913 / 755 - 2128

GAMMA RAY / NEUTRON / CCL

File No.

Company **Birk Petroleum**

Well **Bowers No. New - 2**

Field **Winterscheid**

County **Woodson** State **Kansas**

Location

2310' FSL & 1900' FEL
NE-NW-SE

Other Services
Perforate
Bridge Plug

Sec. 29 Twp. 23S Rge. 15E

Permanent Datum GL Elevation 1042'

Log Measured From GL

Drilling Measured From KB

Elevation
K.B. 1049'
D.F. NA
G.L. 1042'

API # 15-207-27,070

Date	1-19-2007
Run Number	One
Depth Driller	1938.0
Depth Logger	1909.8
Bottom Logged Interval	1907.8
Top Log Interval	20.0
Fluid Level	Full
Type Fluid	Water
Density / Viscosity	NA
Salinity - PPM Cl	NA
Max Recorded Temp	NA
Estimated Cement Top	0.0
Equipment No	104
Recorded By	Steve Winterscheid
Witnessed By	Ed Birk
BORE HOLE RECORD	
Run No	101
From	TO
0.0	40.0
0.75"	1938.0
CASING RECORD	
Size	WGT
4.50"	0.0
1924.0	0.0

Drilling Contractor :
SKYY Drilling

Comments

All interpretations are opinions based on inferences from electrical or other measurements and we cannot and do not guarantee the accuracy or correctness of any interpretation, and we shall not, except in the case of gross or wilful negligence on our part, be liable or responsible for any loss, costs, damages, or expenses incurred or sustained by anyone resulting from any interpretation made by any of our officers, agents or employees. These interpretations are also subject to our general terms and conditions set out in our current Price Schedule.

Database File: bower2n.db
Dataset Pathname: pass1
Presentation Format: gr-n-ccl
Dataset Creation: Fri Jan 19 10:45:10 2007 by Log 6.2_B4
Charted by: Depth in Feet scaled 1:240

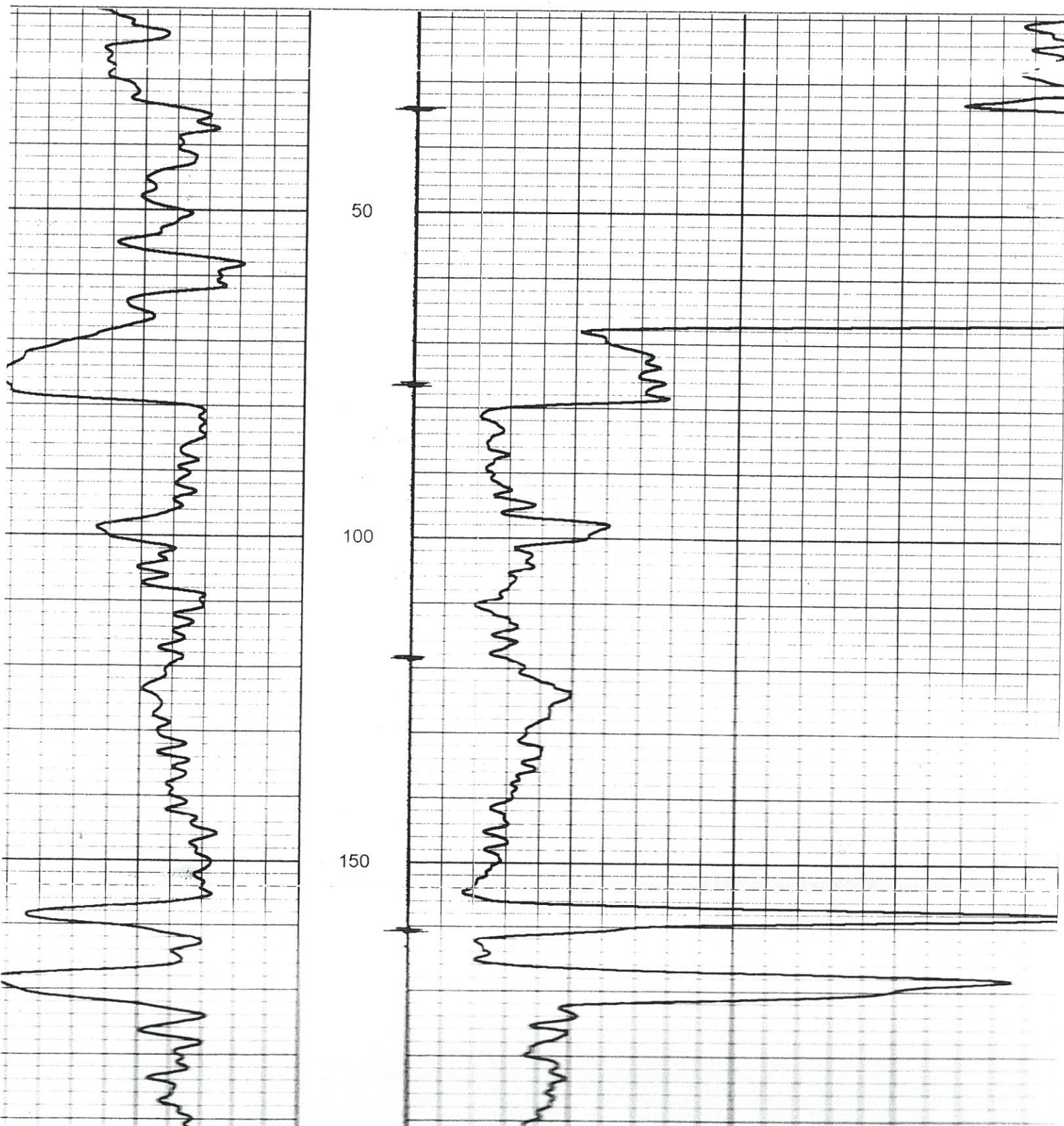
GR

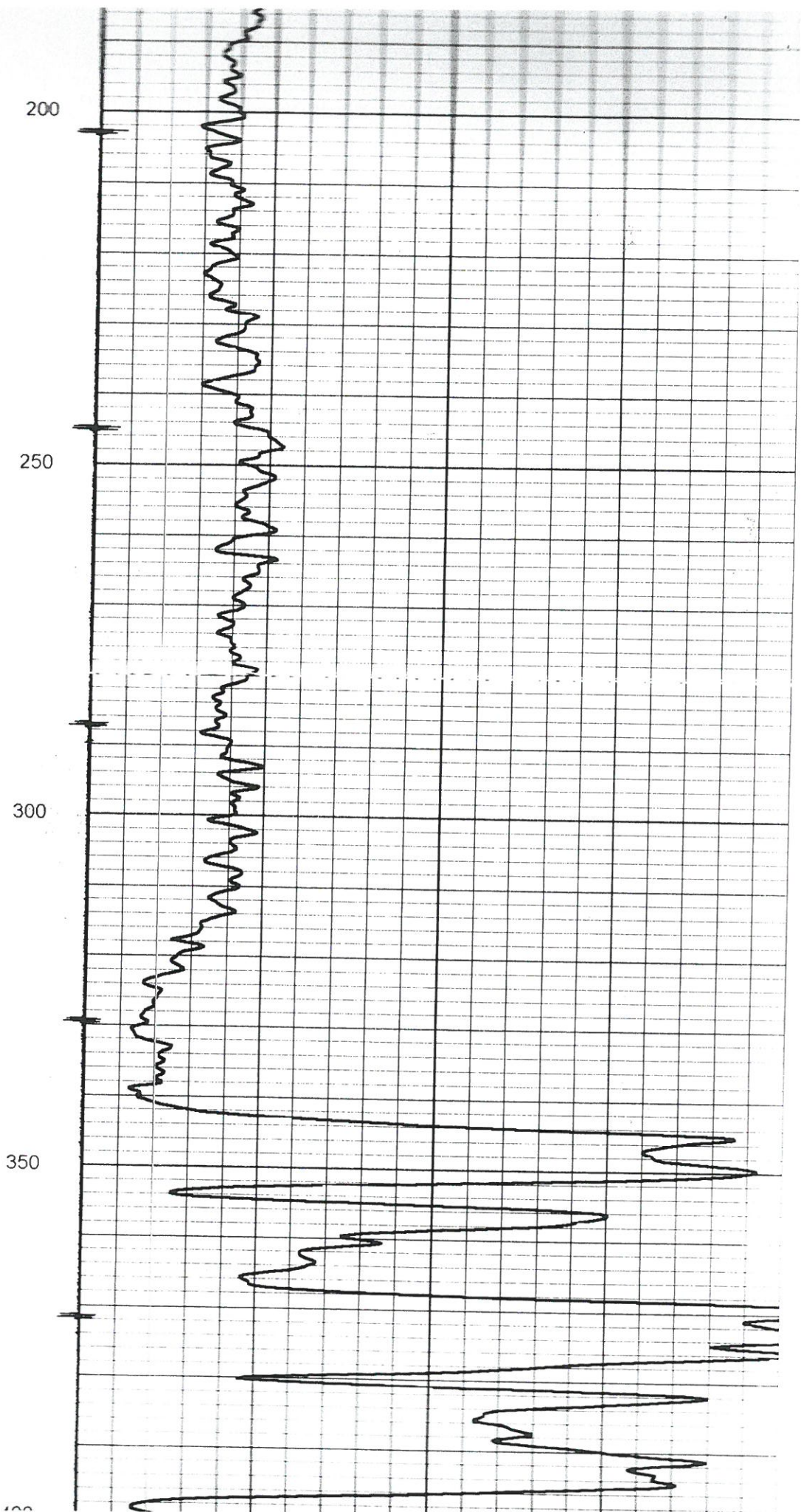
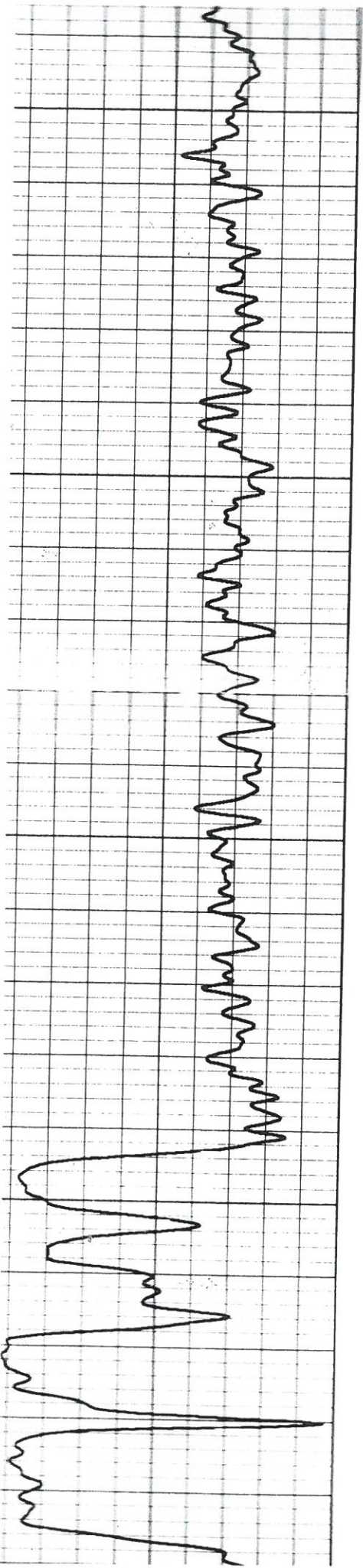
150

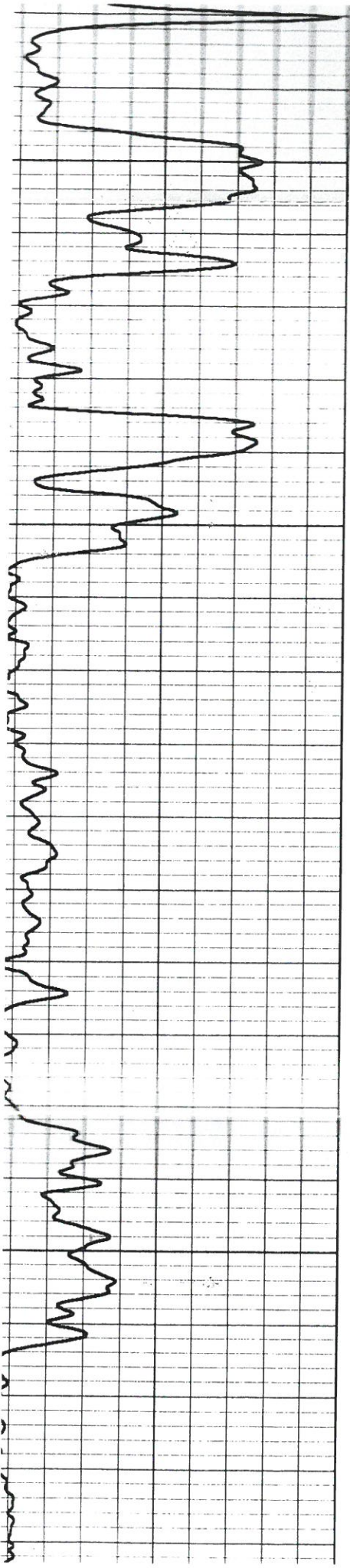
100

NEU

1800





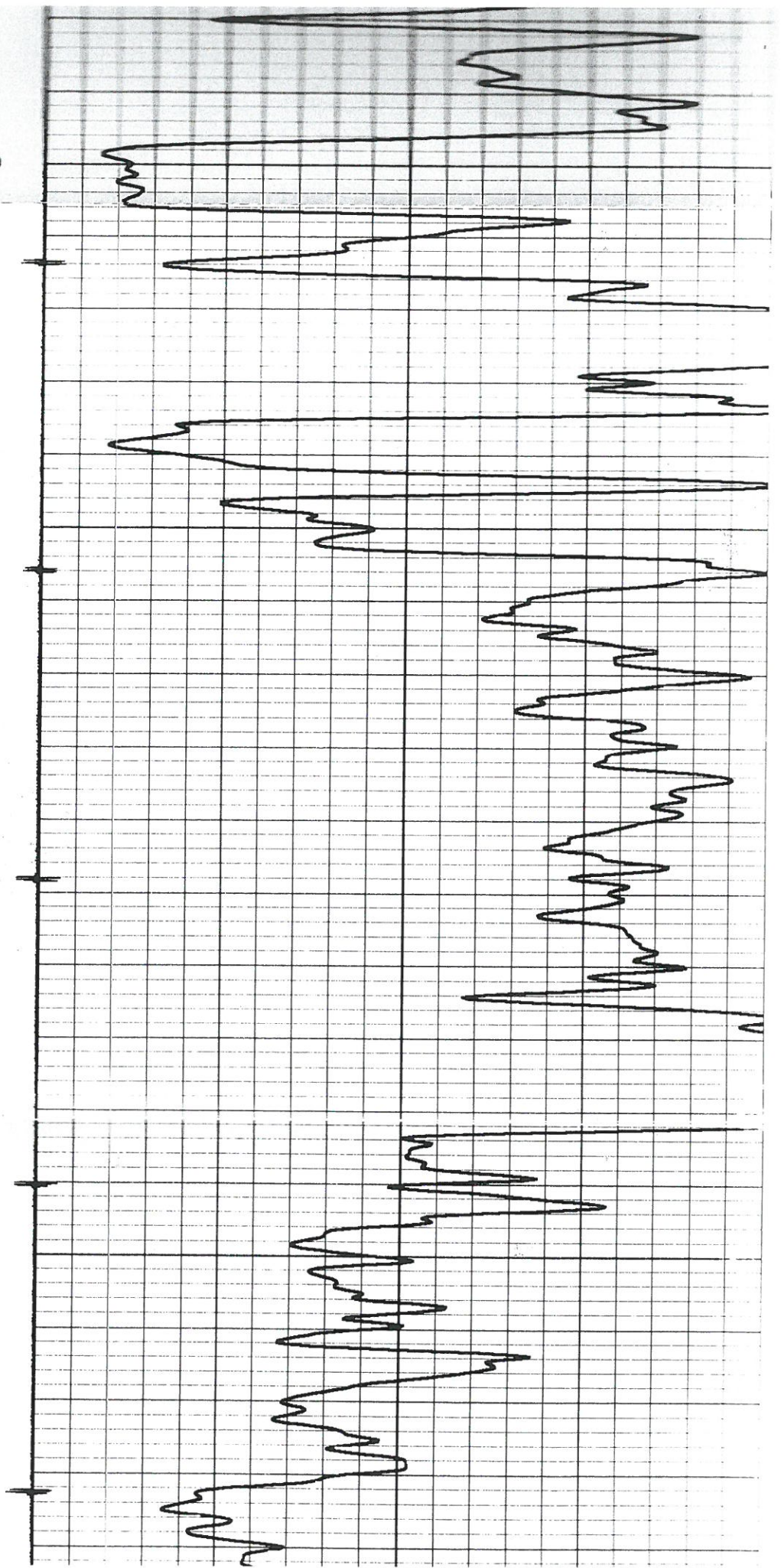


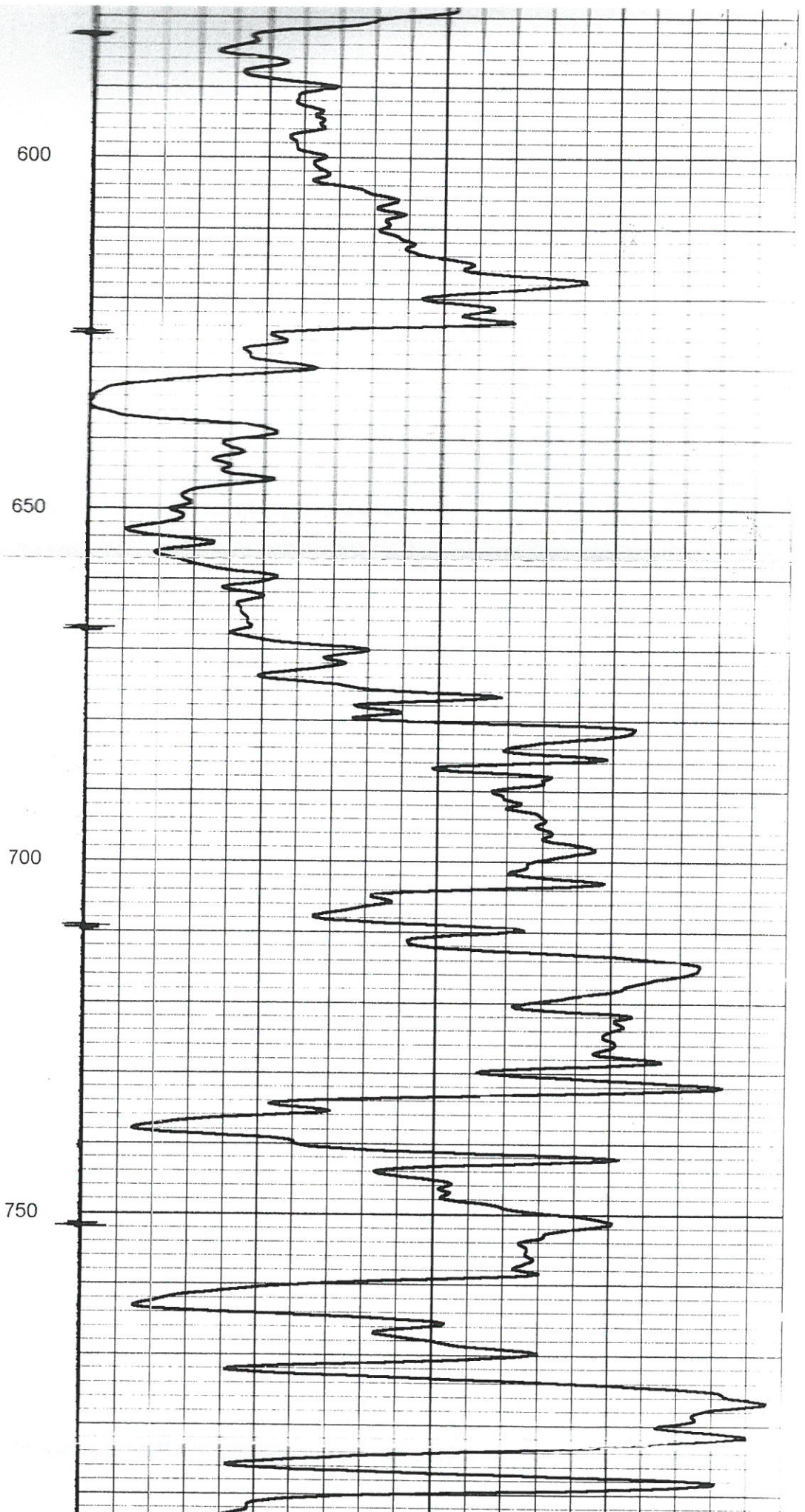
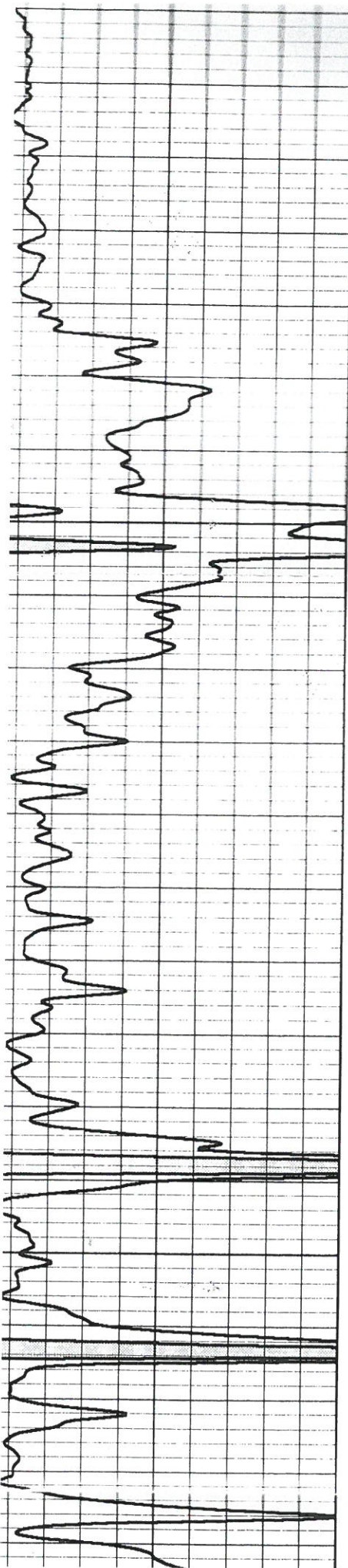
400

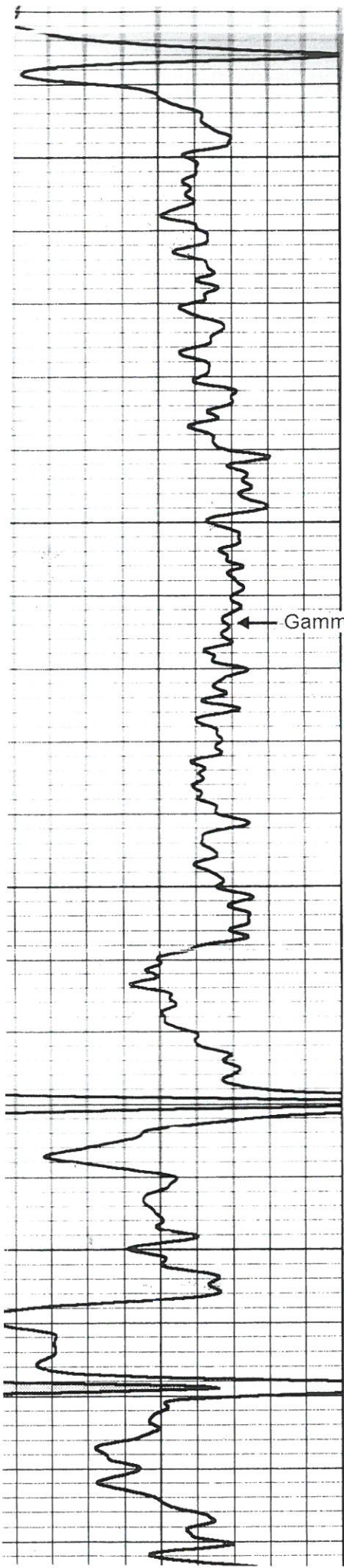
450

500

550

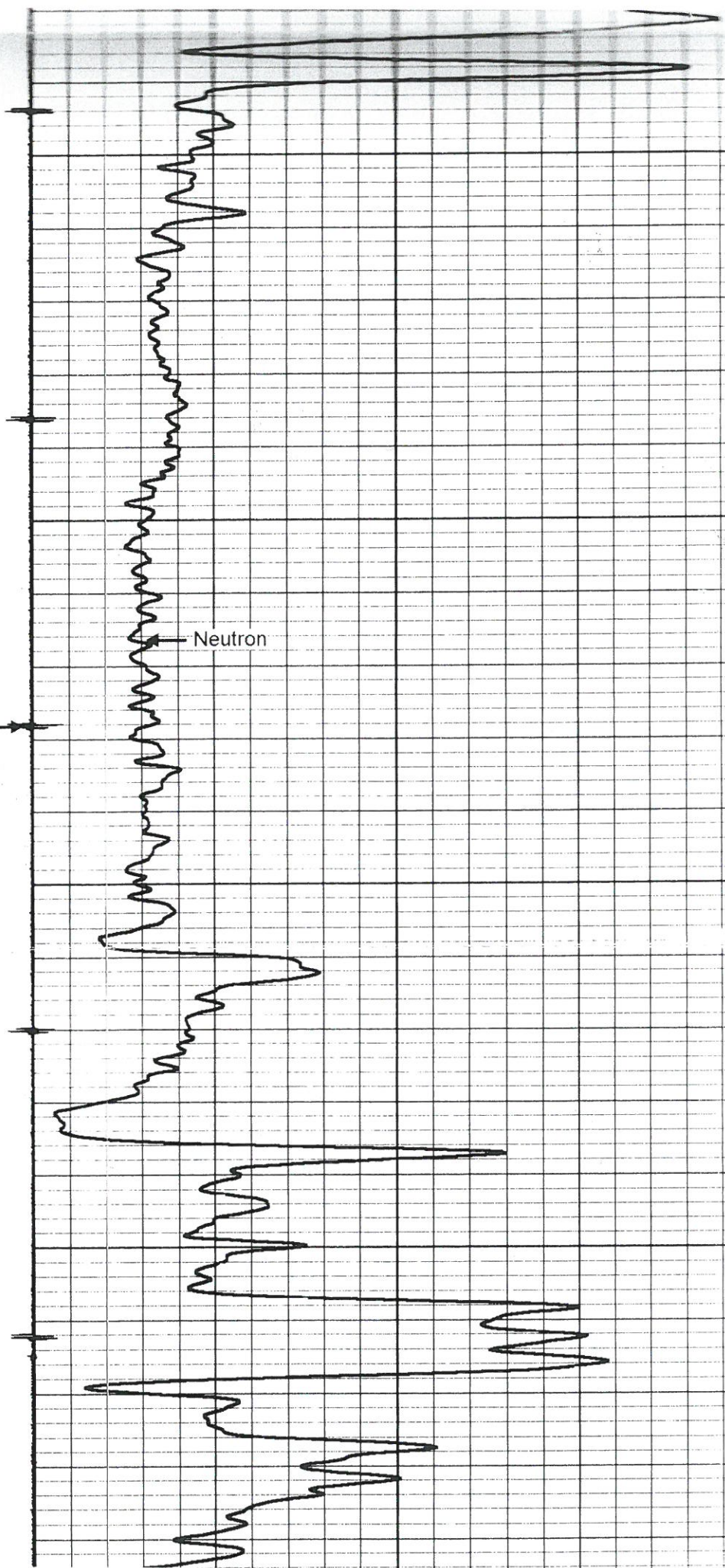




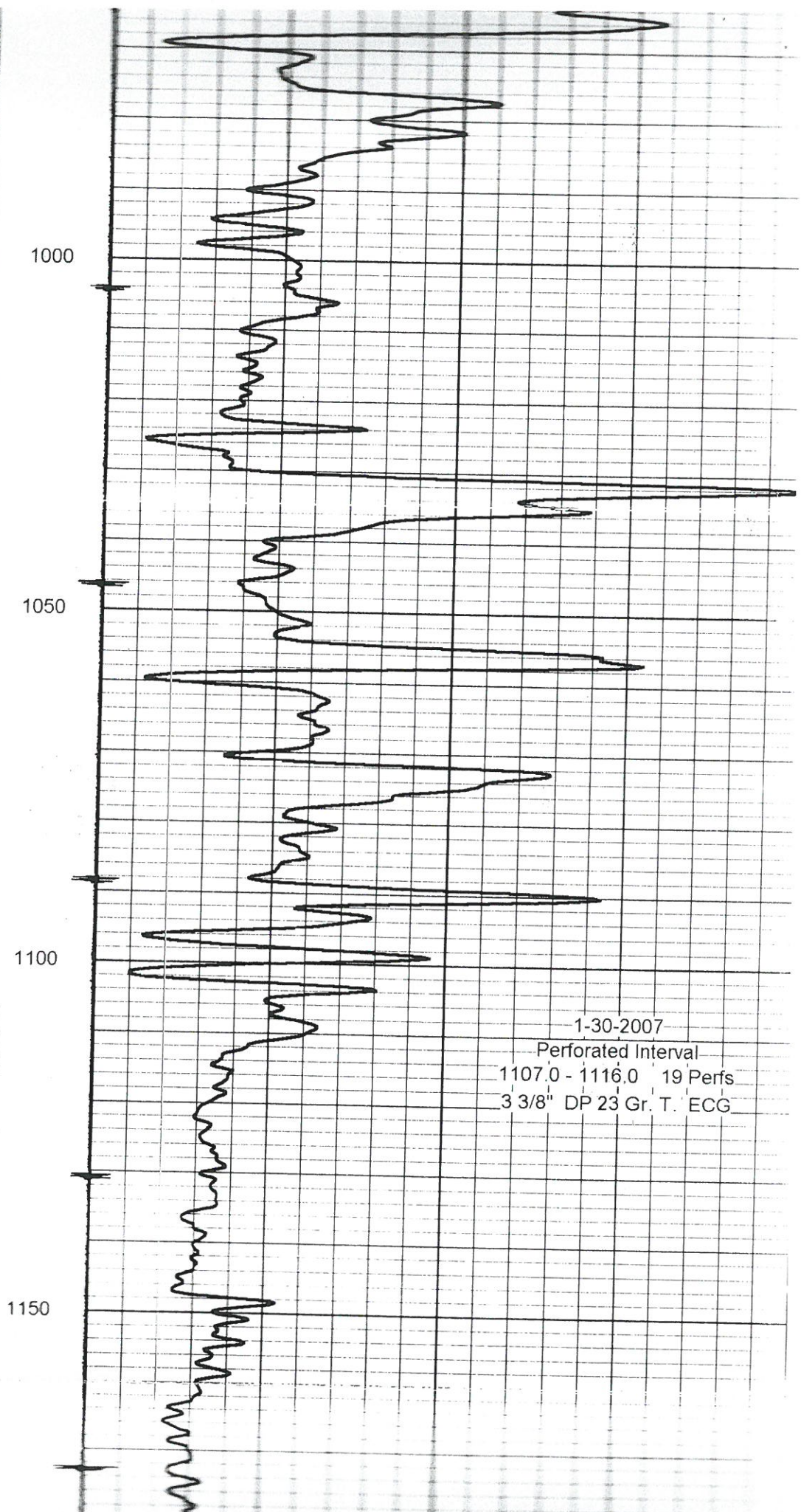
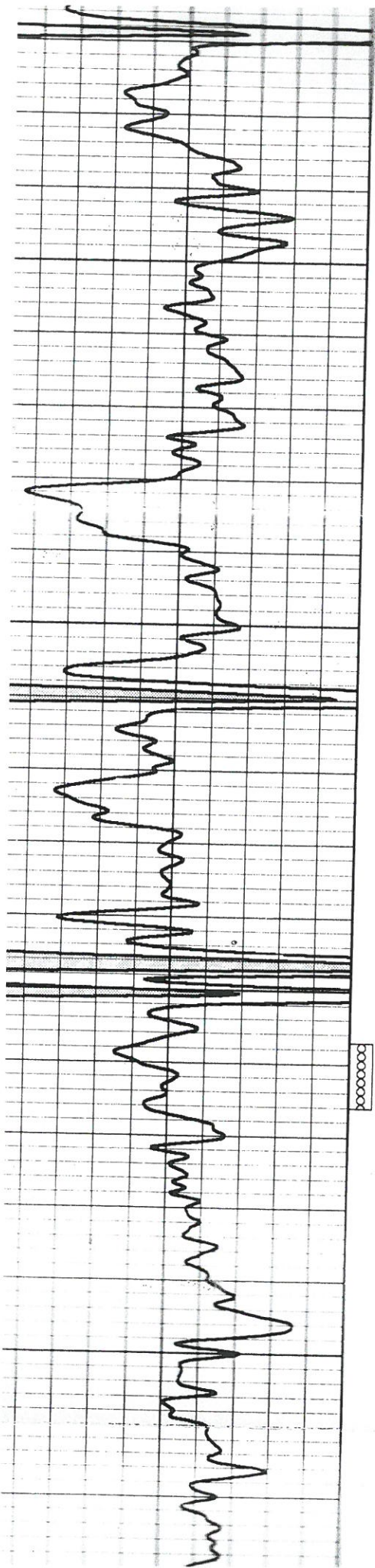


Gamma Ray

CCL



Neutron



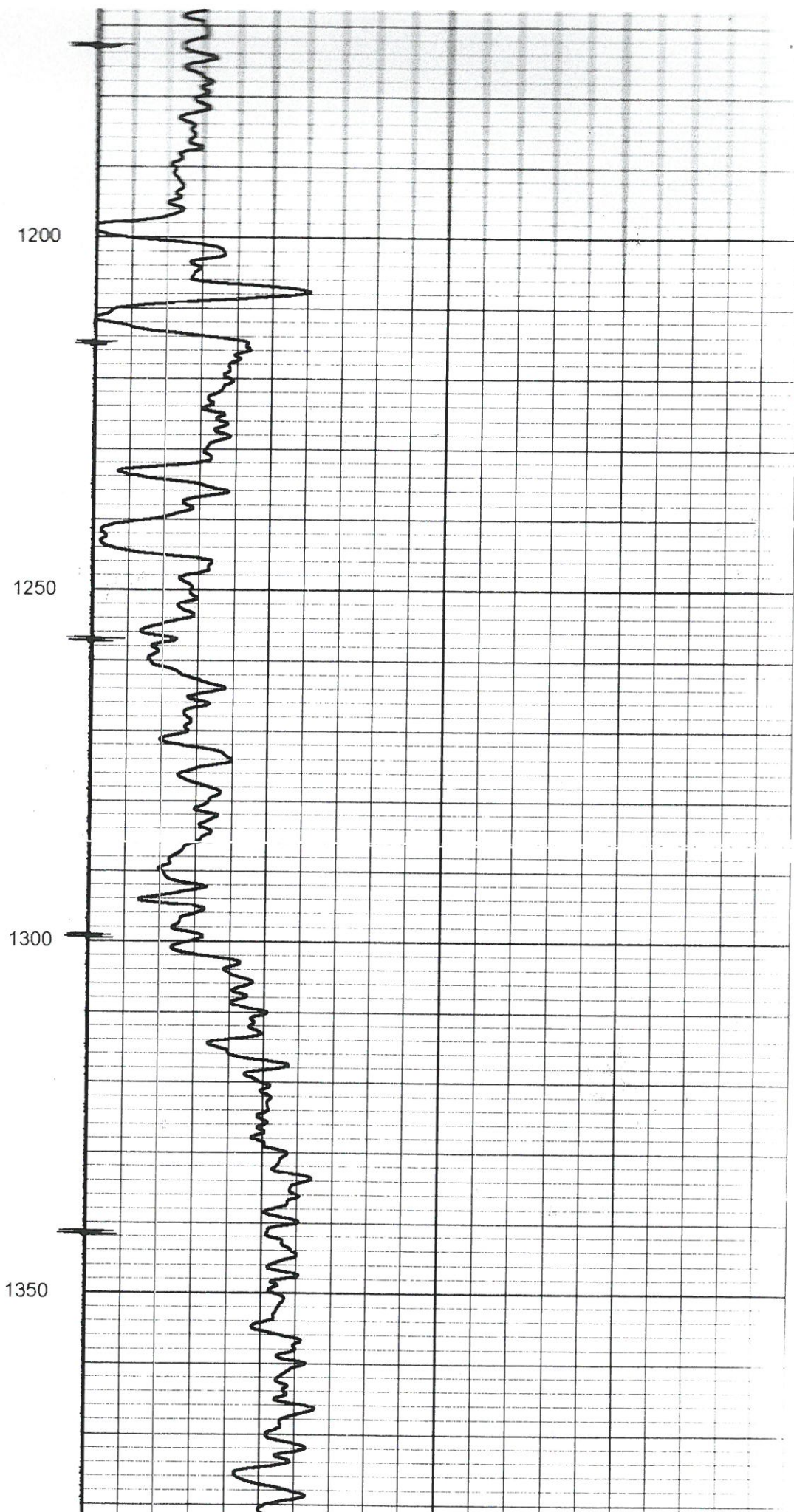
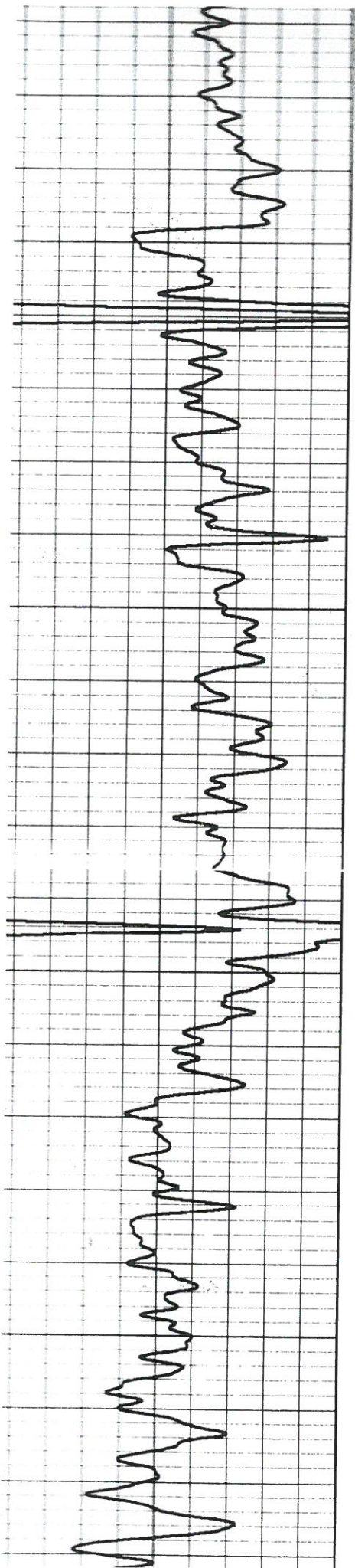
1000

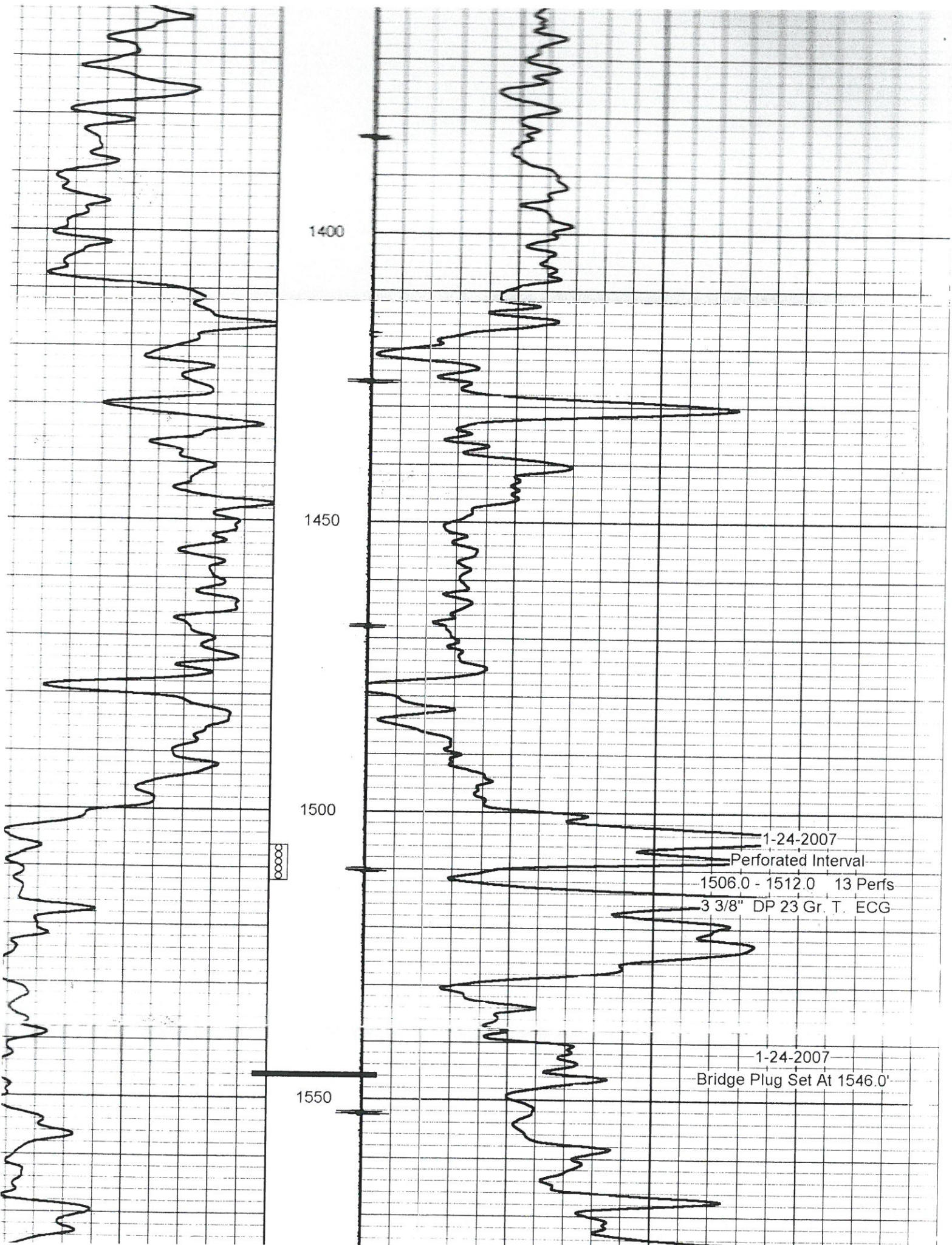
1050

1100

1150

1-30-2007
Perforated Interval
1107.0 - 1116.0 19 Perfs
3 3/8" DP 23 Gr. T. ECG





1400

1450

1500

1550

1-24-2007

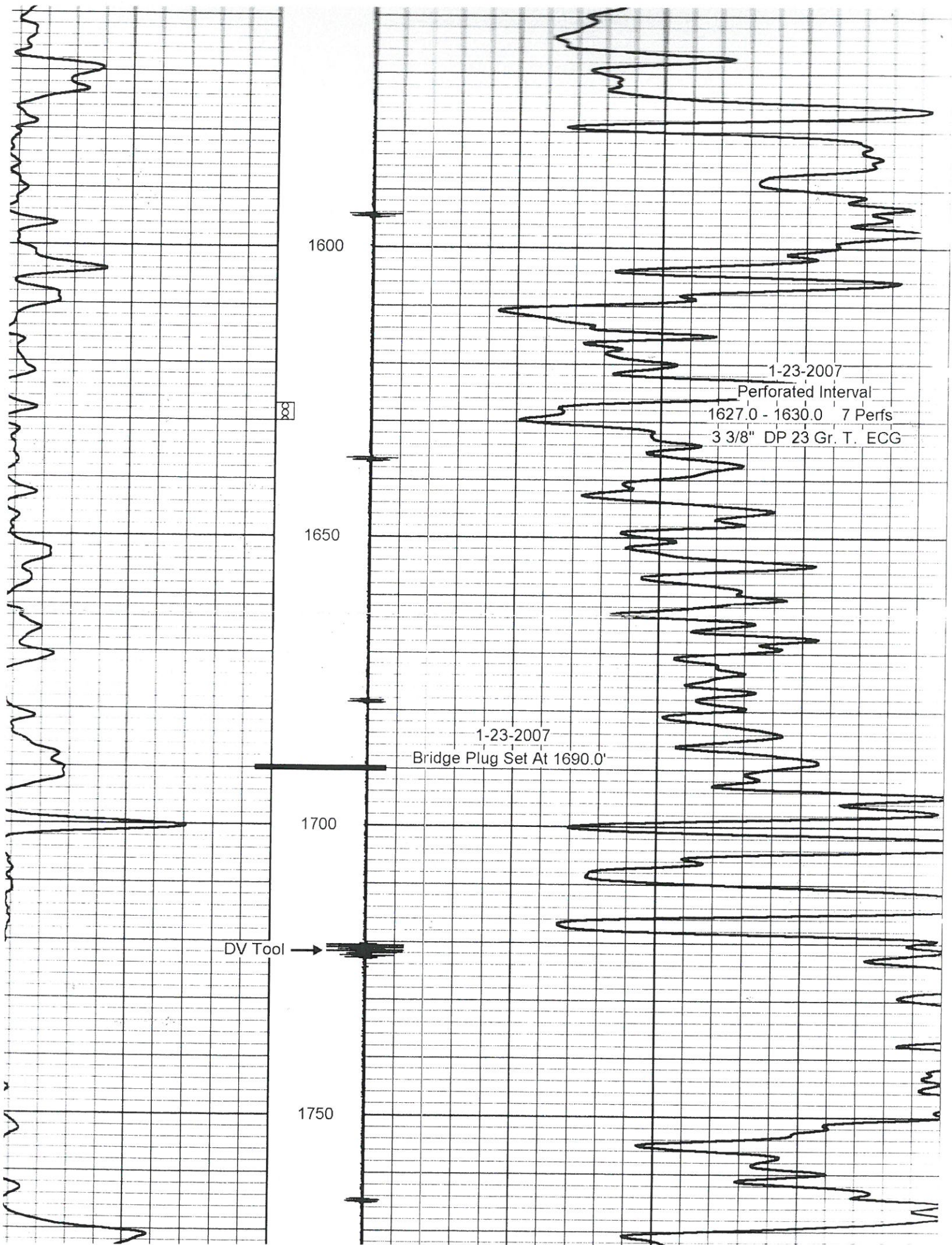
Perforated Interval

1506.0 - 1512.0 13 Perfs

3 3/8" DP 23 Gr. T. ECG

1-24-2007

Bridge Plug Set At 1546.0'



1600

1650

1700

1750

1-23-2007

Perforated Interval

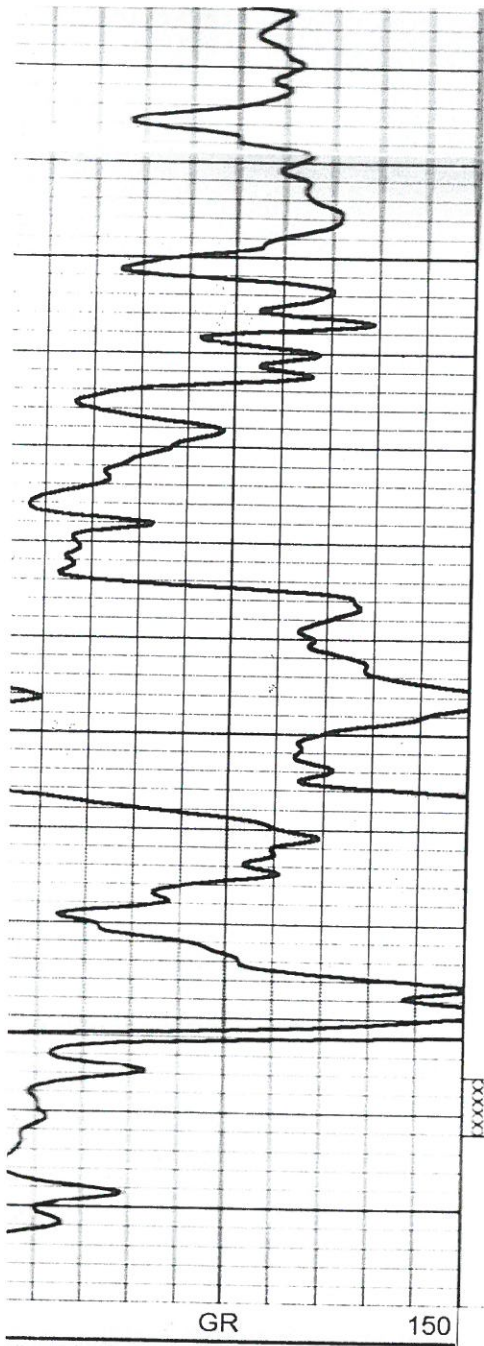
1627.0 - 1630.0 7 Perfs

3 3/8" DP 23 Gr. T. ECG

1-23-2007

Bridge Plug Set At 1690.0'

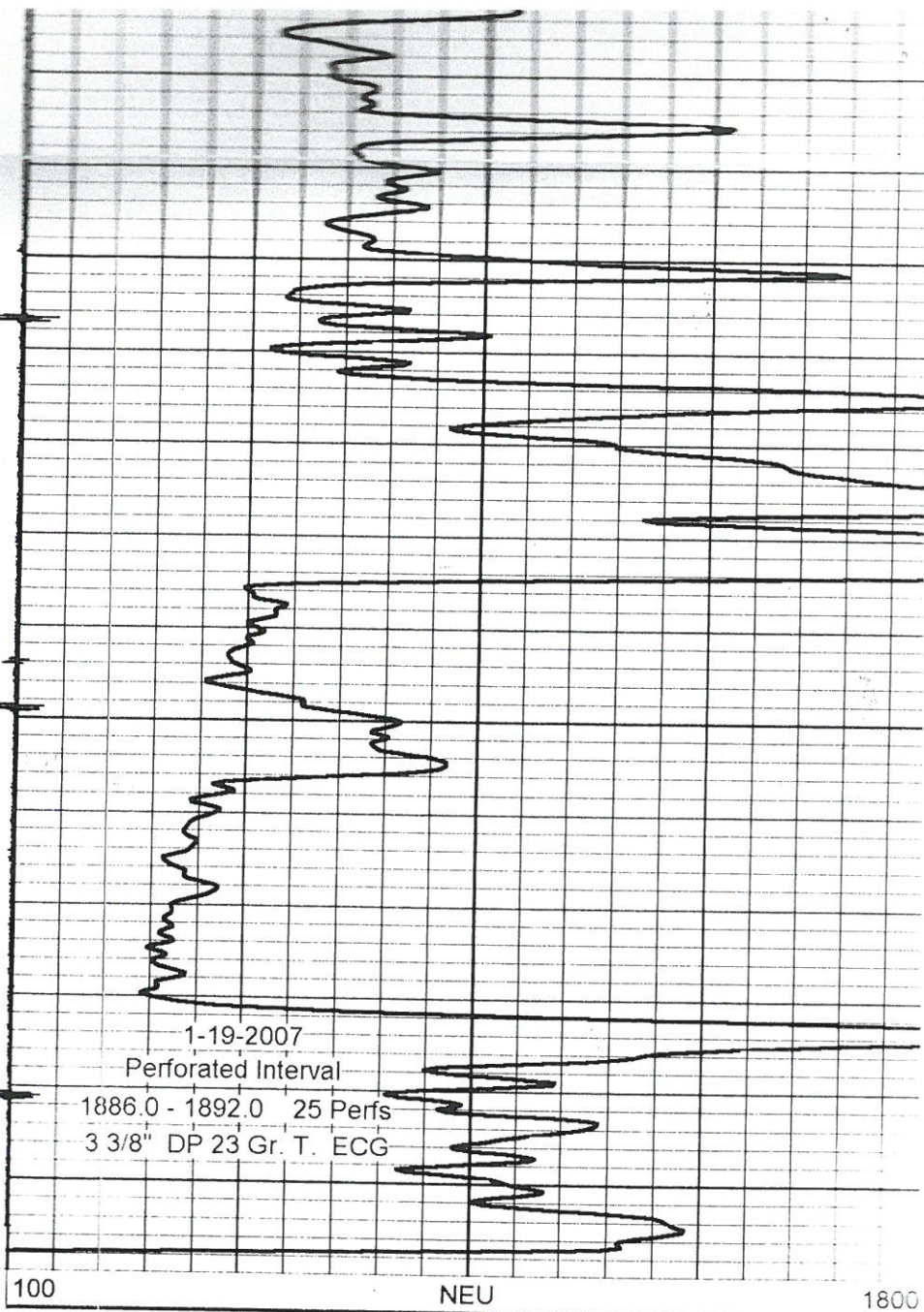
DV Tool →



1800

1850

1900



STATE CORPORATION COMMISSION OF KANSAS
OIL & GAS CONSERVATION DIVISION
WELL COMPLETION OR RECOMPLETION FORM
ACO-1 WELL HISTORY
DESCRIPTION OF WELL AND LEASE

Operator: License # 9430
Name CMT. Petro. Resources, Inc.
Address Rt. 2 Box 149
City/State/Zip Canton, Mo. 63435

Purchaser MACLASKEY OIL PURCHASING
EL Dorado, Ks.

Operator Contact Person Steve Slater
Phone 316-625-2983

Contractor: License # 9430
Name Company Tools

Wellsite Geologist NONE
Phone

Designate Type of Completion
☒ New Well ☐ Re-Entry ☐ Workover

☒ Oil ☐ SWD ☐ Temp Abd
☐ Gas ☐ Inj ☐ Delayed Comp.
☐ Dry ☐ Other (Core, Water Supply etc.)

If OWO: old well info as follows:

Operator
Well Name
Comp. Date Old Total Depth

WELL HISTORY

Drilling Method:

☒ Mid Rotary ☐ Air Rotary ☐ Cable

~~XXXXXX~~
12-20-85 1-12-86 1-19-86
Spud Date Date Reached TD Completion Date

15721 Ft.
Total Depth PSTD

Amount of Surface Pipe Set and Cemented at 40 feet
Multiple Stage Cementing Collar Used? ☐ Yes ☒ No
If yes, show depth set feet
If alternate 2 completion, cement circulated
from 40 feet depth to top w/ 11 SX cmt
Cement Company Name Portland
Invoice # Superior Lumber

API NO. 207-25,418
County Woodson
SE NE SW 29 23 15 East
Sec. Twp. Rge. X West

1520 Ft North from Southeast Corner of Section
2970 Ft West from Southeast Corner of Section
(Note: Locate well in section plat below)

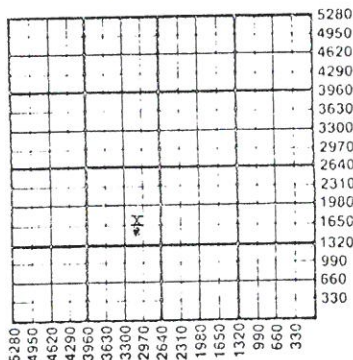
Lease Name Boxers Well # 1

Field Name

Producing Formation Mississippi Lime

Elevation: Ground Unknown KB

Section Plat



WATER SUPPLY INFORMATION

Disposition of Produced Water: ☐ Disposal
Docket # ☐ Repressuring

Questions in this portion of the ACO-1 call:

Water Resources Board (913) 296-3717

Source of Water:

Division of Water Resources Permit #

Groundwater Ft North from Southeast Corner
(Well) Ft West from Southeast Corner of
Sec Twp Rge East West

Surface Water Ft North from Southeast Corner
(Stream, pond etc) Ft West from Southeast Corner
Sec Twp Rge East West

Other (explain)
(purchased from city, R.W.D. #)

INSTRUCTIONS: This form shall be completed in duplicate and filed with the Kansas Corporation Commission, 200 Colorado Derby Building, Wichita, Kansas 67202, within 90 days after completion or recompletion of any well. Rule 82-3-130 and 82-3-107 apply.

Information on side two of this form will be held confidential for a period of 12 months if requested in writing and submitted with the form. See rule 82-3-107 for confidentiality in excess of 12 months. One copy of all wireline logs and drillers time log shall be attached with this form. Submit CP-4 form with all plugged wells. Submit CP-111 form with all temporarily abandoned wells.

All requirements of the statutes, rules and regulations promulgated to regulate the oil and gas industry have been fully complied with and the statements herein are complete and correct to the best of my knowledge.

Signature Steve Slater

Title Supervisor Date 3-18-87

Subscribed and sworn to before me this 18th day of March

19 87 Notary Public Kay Jean Brown

Date Commission Expires 11, 1990

K.C.C. OFFICE USE ONLY		
F	<input type="checkbox"/> Letter of Confidentiality Attached	
C	<input type="checkbox"/> Wireline Log Received	
C	<input type="checkbox"/> Drillers Timelog Received	
Distribution		
<input type="checkbox"/> KCC	<input type="checkbox"/> SWD/Rep	<input type="checkbox"/> NGPA
<input type="checkbox"/> KGS	<input type="checkbox"/> Plug	<input type="checkbox"/> Other
(Specify)		
<u></u>		
<u></u>		

SIDE TWO

Operator Name CMT Petro Resources Inc. Lease Name Bowers Well # 1Sec. 29 Twp. 23 Rge. 15 ☐ East ☒ West County Woodson

WELL LOG

INSTRUCTIONS: Show important tops and base of formations penetrated. Detail all cores. Report all drill stem tests giving interval tested, time tool open and closed, flowing and shut-in pressures, whether shut-in pressure reached static level, hydrostatic pressures, bottom hole temperature, fluid recovery, and flow rates if gas to surface during test. Attach extra sheet if more space is needed. Attach copy of log.

Drill Stem Tests Taken ☐ Yes ☒ No
 Samples Sent to Geological Survey ☐ Yes ☒ No
 Cores Taken ☐ Yes ☒ No

Formation Description
☒ Log ☐ Sample

Name	Top	Bottom
KC Lime	377'	822'
Sand Squirell	1140'	1148'
very little show of oil		
Miss. Lime	1525'	
Miss. Lime Break	1541'	1549'
show of oil		
Miss. Lime		1572'

CASING RECORD ☐ New ☒ Used

Report all strings set-conductor, surface, intermediate, production, etc.

Purpose of String	Size Hole Drilled	Size Casing Set (In O.D.)	Weight Lbs/Ft.	Setting Depth	Type of Cement	#Sacks Used	Type and Percent Additives
Surface	10"	7 1/2"	22	40'	Portland	11	15X Calcium
Long String	4 1/2"	4 1/2"	9	1560'	Consolidated	240	
Production	xxxxx	2-3/8	xxxxx	1530	xxxxx	xxxxx	xxxxxx

PERFORATION RECORD

Shots Per Foot	Specify Footage of Each Interval Perforated	Acid, Fracture, Shot, Cement Squeeze Record (Amount and Kind of Material Used)	Depth
2	1539' to 1545'	Acid	

TUBING RECORD	Size	Set At	Packer at	Liner Run	<input type="checkbox"/> Yes <input type="checkbox"/> No
	2-3/8	1530			

Date of First Production	Producing Method
1-22-86	<input type="checkbox"/> Flowing <input checked="" type="checkbox"/> Pumping <input type="checkbox"/> Gas Lift <input type="checkbox"/> Other (explain).....

Estimated Production Per 24 Hours	Oil	Gas	Water	Gas-Oil Ratio	Gravity
	3 Bbls	xxxxx MCF	5 Bbls		38

METHOD OF COMPLETION

Production Interval

Disposition of gas: ☒ Vented ☐ Open Hole ☒ Perforation.
☐ Sold ☐ Other (Specify)
☐ Used on Lease ☐ Dually Completed ☐ Commingled

Adams Jetwell Service, Inc.

629 So. Santa Fe

Chanute, Kansas 66720

COMPANY <u>C.M.T. PETRO RESOURCES, INC.</u>	
RT. 2, BOX 149, CANTON, MO 63435	
WELL <u>BOWERS # 2</u>	
FIELD _____	
COUNTY <u>WOODSON</u>	STATE <u>KANSAS</u>
Location: <u>1520' FSL 2570' FEL SE/4</u> <u>API # 15-207-25,506</u>	
Sec. <u>29</u>	Twp. <u>23S</u> Rge. <u>15E</u>

Permanent Datum: _____	Elev. _____
Log measured from _____	G.L. _____
Drilling measured from _____	G.L. <u>1055.8</u>

Date	8-20-87	8-20-87 (9-15-87)	8-20-87
Run No.	1-N.W.	1-N.W. (1-N.W.)	1-N.W.
Type Log	GAMMA RAY	PERFORATE	NEUTRON
Depth - Driller	1563.5'		1563.5'
Depth - Logger	1557'		1562'
Bottom logged interval	1050'		1050'
Top logged interval	WTR.		WTR.
Type fluid in hole			
Cemented with			
Plug - Set at	FULL		FULL
Level			
Max. rec. temp., deg F.			
Type of shots	ADAMS		ADAMS
Recorded by	SLATER		SLATER
Witnessed by			

BORE-HOLE RECORD			CASING RECORD		
RUN No.	Bit	From To	Size	Wgt.	From To
			4 1/2"	0	

NEUTRON

DEPTH

GAMMA RAY

1100

1150

1200

1250

1500

PERFORATED 17 HOLES FROM 1520'-1528'
WITH 3 1/2 SKIP JETS 9-15-87

PERFORATED 13 HOLES FROM 1539-1545
WITH 3 1/8 PMS IN CARRIER GUN 8-20-87

1550

R. D. 1557'
T. D. 1563.5'

R. D. 1562'
T. D. 1563.5'

C.M.T. PETER RESOURCES, INC.

BOILERS # 2

WOODSON COUNTY, MISSISSIPPI

SE/4 29-215-12

8-20-87 (9-15-87)